

Contents

Installation Helps

Read Me First!	3
Installation Checklist	4
Planning List	5

Getting Started

Introduction	9
Conventions Used in This Guide	9
Administrator's Overview of Corel WordPerfect 7	9
Corel WordPerfect Administration	9
Non-root Installation of Corel WordPerfect	10
WPAPP Shared Code	10
Online System Administrator Help	11
Installation Questions and Answers	11
Product Compatibility	11
System Requirements for Corel WordPerfect 7	12
Platform Compatibility	12

Loading the Corel WordPerfect Media

Loading the Corel WordPerfect Media	15
Loading Corel WordPerfect from a CD-ROM	15

Installing Corel WordPerfect 7 at a GUI Terminal

Installing Corel WordPerfect 7 at a GUI Terminal	19
Running the Installation Program	19
Answering System Information Questions	20
Selecting Terminal Drivers	22
Selecting Printer Drivers	22
Assigning Printer Drivers to Destinations	23
Completing the Installation	24
Testing Your Corel WordPerfect 7 Installation	28
Starting Corel WordPerfect 7 for the First Time	28
Adding Corel WordPerfect to Your Window Manager Menu	30
Introducing Corel WordPerfect 7 SysAdmin Help	30
Setting Up UNIX Users to Run Corel WordPerfect 7	33
Setting Up Defaults for Corel WordPerfect 7 Users	33
Testing Corel WordPerfect 7 for Each UNIX User	34
Providing Corel WordPerfect 7 Learn Files for Users	34
Completing Optional Corel WordPerfect 7 Setup Tasks	35

Installing Corel WordPerfect 7 at a Character-based Terminal

Installing Corel WordPerfect 7 at a Character-based Terminal	39
Running the Installation Program	39
Answering System Information Questions	40
Selecting Terminal Drivers	42
Selecting Printer Drivers	44
Assigning Printer Drivers to Destinations	45
Completing the Installation	47
Testing Your Corel WordPerfect 7 Installation	51
Starting Corel WordPerfect 7 on a Character-Based Terminal	51
Starting Corel WordPerfect 7 for Character-Based Terminals on an X Station	52
Resolving Problems Starting Corel WordPerfect 7	54

Testing Corel WordPerfect 7	7
Introducing Corel WordPerfect 7 SysAdmin Help	8
Setting Up UNIX Users to Run Corel WordPerfect 7	9
Setting Up Defaults for Corel WordPerfect 7 Users	10
Testing Corel WordPerfect 7 for Each UNIX User	11
Completing Optional Corel WordPerfect 7 Setup Tasks	12

Finding More Documentation Online

Using SysAdmin Help (xwpsahlp) for the X Window System	13
Starting Corel WordPerfect 7 SysAdmin Help	14
Exploring Corel WordPerfect 7 SysAdmin Help	15
Exiting Corel WordPerfect 7 SysAdmin Help	16
Using SysAdmin Help (wpsahlp) for Character-Based Terminals	17
Starting Corel WordPerfect 7 SysAdmin Help	18
Exploring Corel WordPerfect 7 SysAdmin Help	19
Exiting Corel WordPerfect 7 SysAdmin Help	20

Appendix

Appendix A: Non-root Installations of Corel WordPerfect	21
Preparation for a Non-root Installation of Corel WordPerfect	22
Post-Installation Tasks	23
Appendix B: Remote Installations of Corel WordPerfect	24
Remote Installation from a CD-ROM	25
Appendix C: UNIX Command Quick Reference	26
System Information	27
Environment Variables	28
Directories	29
Files	30
Printing	31
Processes	32
X Fonts	33

Glossary/Index

Glossary	34
Index	35

Installation Helps

.....

Read Me First!

The *Installation Checklist* and *Planning List* on the next two pages provide steps and background information to help you install Corel® WordPerfect® 7 for the X Window System and/or Corel WordPerfect for character-based terminals. By taking advantage of the guidance provided by the *Installation Checklist* and *Planning List*, you can do the following:

- ♦ Plan for the disk space requirements of Corel WordPerfect
- ♦ Receive assistance with more complex installation alternatives (for example, non-root installations or remote installations)
- ♦ Complete all the required steps in the Corel WordPerfect installation process in the correct order
- ♦ Learn where to find additional information in Corel WordPerfect SysAdmin Help

Please refer to the *Installation Checklist* and *Planning List* provided in this section before beginning the installation process.

Installation Checklist

Instructions for all the following tasks are included in this guide.

Task

- ☐ 1. Read *Administrator's Overview of Corel WordPerfect 7* and *Questions and Answers*.
- ☐ 2. Fill out the *Planning List* on the next page.
- ☐ 3. Choose or create the Corel WordPerfect installation directory.
- ☐ 4. Load the Corel WordPerfect media.
- ☐ 5. Start the Installation program and provide the requested information.
- ☐ 6. Select terminal drivers.
- ☐ 7. Select printer drivers.
- ☐ 8. Assign printer drivers to destinations.
- ☐ 9. Review the Corel WordPerfect README files.
- ☐ 10. Test your Corel WordPerfect installation.
- ☐ 11. Set up UNIX* users to run Corel WordPerfect.

Planning List

Item and Example	Helps and Hints for Planning Your Corel WordPerfect Installation
Fill in the Shaded Boxes	
Primary Corel WordPerfect administrator	Log in as the primary Corel WordPerfect administrator to install Corel WordPerfect. For the most automatic installation, log in as root. For more control over the installation, choose or create another username to function as the primary Corel WordPerfect administrator.
Example: wordperf	
Corel WordPerfect installation directory	Install the Corel WordPerfect software in this directory. The Installation program will display specific minimum and maximum disk space requirements for your version of UNIX. The final size of the permanent installation depends on choices you make as you install Corel WordPerfect.
Example: /apps/wp60	
Existing Corel® application	If you already have Corel WordPerfect 5.1 or Novell GroupWise® on your system, you can use its configuration of printer drivers and printer destinations to set the defaults for your Corel WordPerfect 7 installation. Record the directory where the Installation program can locate an existing product installation to get defaults from.
Example: /apps/wp51	
License number	Record your Corel WordPerfect license number. If you are upgrading from Corel WordPerfect 5.1, record your existing Corel WordPerfect 5.1 license number here and on the Upgrade Certificate. If this is your first Corel WordPerfect installation, record the license number printed on the Certificate of License accompanying the Corel WordPerfect 7 software.
License server	Corel WordPerfect uses a License Manager program to monitor the number of concurrent sessions. Record the hostname of the server on your network where you want the License Manager to run.
Example: xapps	

The *Planning List* continues on the next page.

Item and Example	Helps and Hints for Planning Your Corel WordPerfect Installation
Fill in the Shaded Boxes	
	List the terminals you plan to use with Corel WordPerfect. Record the WPTERM7 setting for each terminal as you select it during installation.
Terminals	WPTERM7 settings
Examples: AT&T 6386 Console Digital* VT 100 WYSE* 60	Examples: att6386col vt102alt wyse60epc
	List the printers and printer destinations you plan to use with Corel WordPerfect. A printer destination can be a specific device or an environment variable.
Printers/Printer Drivers	Printer destinations
Examples: Hewlett Packard* LaserJet 4 Apple* LaserWriter* II	Examples: lp1 \$PRINTER

t. Record
during

with Corel
e or an

Getting Started

.....

Getting Started

Introduction

This guide is designed to assist you in installing and maintaining Corel WordPerfect 7 for the X Window System and/or Corel WordPerfect 7 for character-based terminals on your UNIX system.

Conventions Used in This Guide

When sample commands include text in italics, the italics indicate a variable part of the command. Replace the text in italics with the specific information for your circumstances:

/WPdir/wpbin/xwp

In the example above, you would replace */WPdir* with the full pathname of the Corel WordPerfect installation directory when you type the command.

Case-sensitive UNIX commands, filenames, directory names, environment variables, and so on, are identified in a different font than the rest of the text:

```
setenv PATH $PATH:/usr/bin/X11
```

BASICS: Remember that UNIX is case sensitive. Type uppercase and lowercase letters exactly as they appear in the instructions.

“Basics” paragraphs like the one above provide background information about the UNIX operating system to clarify concepts and provide examples to assist newcomers to UNIX.

Administrator's Overview of Corel WordPerfect 7

Corel WordPerfect 7 for the X Window System is designed to run in a graphical user interface (GUI) environment. A GUI environment requires that a window manager such as the Motif window manager be running on a windowing workstation, X terminal, or other hardware for which an X emulator is available (such as a PC or a Macintosh*) before you can start Corel WordPerfect. In this guide, all these possible hardware configurations are grouped under the term *X station*.

Corel WordPerfect 7 for character-based terminals is designed to run in a character-based environment.

Corel WordPerfect Administration

When you install either version of Corel WordPerfect 7, you establish the primary Corel WordPerfect administrator. If you log in as *root* to perform the installation, *root* becomes the primary Corel WordPerfect administrator. If you log in as a user other than *root* to perform the installation, that user becomes the primary Corel WordPerfect administrator.

The primary Corel WordPerfect administrator is given ownership of all the Corel WordPerfect program files during installation. The primary Corel WordPerfect administrator can designate other Corel WordPerfect

administrators who share the primary Corel WordPerfect administrator's authority over activities that affect all Corel WordPerfect users, such as setting system default preferences and adding or editing shared printers. See *Administration in Corel WP Management* in Corel WordPerfect SysAdmin Help. Instructions for using Help are found in *Finding More Documentation Online*.

Non-root Installation of Corel WordPerfect

Earlier versions of Corel WordPerfect required you to log in as root to install Corel WordPerfect. This requirement allowed the Installation program to perform certain activities for you automatically. You are no longer required to log in as root to install Corel WordPerfect, and therefore, you can have more control over some aspects of the installation process.

If you choose the non-root installation alternative, you can:

- ♦ Log in using your own username so you become the primary Corel WordPerfect administrator
- ♦ Create a separate login username specifically for performing Corel WordPerfect installation and maintenance functions, so that username becomes the primary Corel WordPerfect administrator

Your choice determines the ownership of the installed Corel WordPerfect program files. Specific considerations, preparations, and instructions for a non-root installation of Corel WordPerfect are provided in *Appendix A: Non-root Installations of Corel WordPerfect*.

WPAPP Shared Code

Other products such as Corel WordPerfect 5.1 and the Novell GroupWise 4.1 Client program are able to share certain executable files and data files. These related applications that can share files are referred to as *WPApp* products.

For these earlier WPApp products, shared executable files are installed in the product's *shbin* directory and shared data files are installed in the product's *shlib* directory. This sharing of files conserves disk space, simplifies printing, and saves time on system administration tasks.

In Corel WordPerfect 7, these shared files are designated as WPApp Shared Code and have a revision number of their own, starting with 1.0. Because the WPApp Shared Code files that ship with Corel WordPerfect 7 are *not* compatible with the shared files used by earlier related products, they are installed in new shared directories that include the revision number in the directory name. For the initial release of Corel WordPerfect 7, the shared directories are named *shbin10* and *shlib10*.

IMPORTANT: Corel WordPerfect 7 *cannot* share directories with earlier WPApp products such as Corel WordPerfect 5.1 and the Novell GroupWise 4.1 Client program. You must install Corel WordPerfect 7 in a completely separate directory structure from these earlier WPApp products.

Although Corel WordPerfect 7 cannot physically share directories with earlier WPApp products, the Installation program lets you use the configuration of printer drivers and printer destinations currently in use by an earlier WPApp product to provide the defaults for your Corel WordPerfect 7 installation.

This guide relies heavily on a supplementary online help system called Corel WordPerfect SysAdmin Help to store lengthy information such as error messages and their solutions, specialized information such as troubleshooting techniques, and background information such as details on the interaction between the WPAApp print process and UNIX print spoolers.

Corel WordPerfect 7 SysAdmin Help (xwpsahlp) is a hypertext help system. Corel WordPerfect SysAdmin Help (wpsahlp) for character-based terminals is a collection of Corel WordPerfect 7 files accessed using List Files in Corel WordPerfect. The same information is available in both online systems.

As part of the installation process, you will be shown how to access and use this online help information. For more complete instructions, see *Finding More Documentation Online*.

Installation Questions and Answers

Product Compatibility

How can I convert my Corel WordPerfect 5.1 installation to Corel WordPerfect 7?

During installation, you can specify the directory where Corel WordPerfect 5.1 is installed as the Corel WordPerfect 7 installation directory.

If you are logged in with sufficient permissions, the Installation program deinstalls the contents of the Corel WordPerfect 5.1 wpbin and wplib directories and installs the files for Corel WordPerfect 7 for the X Window System and/or Corel WordPerfect 7 for character-based terminals. This enables you to automatically use existing Corel WordPerfect 5.1 printer drivers and printer destinations for Corel WordPerfect 7.

IMPORTANT: The Installation program *does not* de-install the Corel WordPerfect 5.1 shbin and shlib directories, in case these directories are also being used by Novell GroupWise 4.1. If you do not need the Corel WordPerfect 5.1 shbin and shlib directories, you can delete them manually.

What products have shared directories compatible with Corel WordPerfect 7?

None at present. Corel WordPerfect 7 uses WPAApp Shared Code 1.0, a new generation of WPAApp shared executable and data files. WPAApp Shared Code 1.0 files are stored in the shbin10 and shlib10 subdirectories of the Corel WordPerfect installation directory.

Can I convert my Corel WordPerfect 5.1 macros for use with Corel WordPerfect 7?

You can convert GUI Corel WordPerfect 5.1 macros to 7 format using the Convert Utility (cvt60). See the *Corel WordPerfect User's Guide* for more information. Character-based Corel WordPerfect 5.1 macros can be converted only for use in the character-based version of Corel WordPerfect 7.

Can I use third-party fonts with Corel WordPerfect 7?

With Corel WordPerfect 7 for the X Window System, yes. You can use the Font Installer (xwpfi) to make Type 1 PostScript* fonts and HP LaserJet fonts available in Corel WordPerfect. See *Font Installer (xwpfi)* in Corel WordPerfect 7 SysAdmin Help (xwpsahlp) for more information.

The character-based version of Corel WordPerfect 7 uses 5.1 printer drivers rather than 7 printer drivers. The Font Installer cannot be used to add third-party fonts to 5.1 printer drivers.

System Requirements for Corel WordPerfect 7

What are the disk space requirements for the Corel WordPerfect software?

Specific disk space requirements for your version of UNIX are displayed when you run the Installation program. The size of your permanent Corel WordPerfect installation depends on the choices you make during installation.

How can I conserve disk space?

During installation, you can choose to install only Corel WordPerfect 7 for the X Window System, only Corel WordPerfect 7 for character-based terminals, or both. After installation, you may be able to delete some Corel WordPerfect program files, depending on your system setup. Refer to *File List* in the *Corel WP Management* section of Corel WordPerfect SysAdmin Help for lists of files you may be able to delete.

What are the RAM requirements for Corel WordPerfect 7?

Specific RAM requirements for your version of UNIX are displayed when you install Corel WordPerfect. However, each Corel WordPerfect user creates a separate Corel WordPerfect process. Therefore, you must multiply the RAM requirements listed in the Installation program by the anticipated number of concurrent Corel WordPerfect users to figure total RAM requirements for Corel WordPerfect. In addition to active Corel WordPerfect processes, the Print Server (wpexc60) runs as a background process.

Platform Compatibility

Can I retrieve documents created with Corel WordPerfect 7 or 6.1 for Windows* or DOS into Corel WordPerfect 7 for UNIX?

Yes. However, Corel WordPerfect documents for Windows and DOS require that a binary transfer take place as the documents are moved from Windows or DOS to UNIX.

Can I use macros and graphics created with Corel WordPerfect 7 or 6.1 for Windows or DOS in Corel WordPerfect 7 for UNIX?

Yes. Again, a binary transfer is required when you bring the files from Windows or DOS to UNIX. However, the macros may require minor editing because a few features in Corel WordPerfect for Windows or DOS are handled differently for UNIX.

Loading the Corel WordPerfect Media

.....

Loading the Corel WordPerfect Media

The instructions in this section assume that you plan to install Corel® WordPerfect® 7 for the X Window System and/or Corel WordPerfect 7 for character-based terminals on a local UNIX machine for the first time.

If you plan to establish a user other than root as the primary Corel WordPerfect administrator, see *Appendix A: Non-root Installations of Corel WordPerfect*, then continue with the instructions below.

If you plan to install Corel WordPerfect on a remote UNIX machine, see *Appendix B: Remote Installations of Corel WordPerfect*, then continue with the instructions below.

IMPORTANT: Before loading the Corel WordPerfect files from the media, you should have completed tasks 1 and 2 on the *Installation Checklist*.

Loading Corel WordPerfect from a CD-ROM

To prepare to install the Corel WordPerfect files from the standard Corel WordPerfect CD-ROM,

- 1 Log in as root where you have access to the CD-ROM drive.
- 2 Refer to your *Planning List* for the name of the directory you plan to use for the Corel WordPerfect installation directory.
- 3 If the directory does not already exist, create the directory.

BASICS: For example, if you decided to use `/apps/wp60` as your Corel WordPerfect installation directory, type `mkdir /apps/wp60`, then press **Enter**.

IMPORTANT: If you are planning a non-root installation, make sure the permissions on the Corel WordPerfect installation directory grant write permission to the planned primary Corel WordPerfect administrator.

Mounting the CD-ROM

Use the UNIX mount command to access the Corel WordPerfect CD-ROM. To use the mount command successfully, you must know the correct device name and options for your UNIX system and device. Sample mount commands are listed in the following table. The `/CDROMdir` in the sample commands represents the full pathname of the directory where you are mounting your CD-ROM.

UNIX Version	CD-ROM Mount Command
AT&T* GIS System 3000	<code>mount -F cdfs -o l,m /dev/cdrom/c0t1l0 /CDROMdir</code>
HP 9000 700/800	<code>mount -rt cdfs /dev/dsk/cdrom /CDROMdir</code>
IBM* RS/6000	<code>mount -vcdafs -r /dev/cd0 /CDROMdir</code>
SCO* UNIX	<code>mount -f HS,lower,novers /dev/cd0 /CDROMdir</code>
Siemons Nixdorf	<code>rm200: mount -F hs -r -o nmconv=lm,fperm=0777 /dev/ios0/sdisk005s0 /CDROMdir</code>
SiliconGraphics* Solaris* 2	<code>mount -rt iso9660 -o setx sc0d310 /CDROMdir</code> (CD-ROM automounts when you reboot.)

UNIX Version	CD-ROM Mount Command
SunOS*	<code>mount -rt hsfs /dev/sr0 /CDROMdir</code>
UnixWare®	<code>mount -F cdfs -r -o fperm=777 /dev/cdrom/device /CDROMdir</code>

If these sample mount commands do not work on your system, you must find the required device name for your CD-ROM drive.

- 1 Determine the mount command for your machine.
- 2 Insert the Corel WordPerfect CD-ROM into the drive of your machine.
- 3 Mount the CD-ROM using the appropriate mount command for your machine.

Running the Installation Program (install.wp)

If you are planning a non-root installation of Corel WordPerfect, you can log out as root at this time and log back in as the primary Corel WordPerfect administrator recorded on your *Planning List*.

- 1 Type `cd /CDROMdir` (where */CDROMdir* is the full pathname of the directory where the CD-ROM is mounted), then press **Enter** to change to the root directory on the CD-ROM.
- 2 Type `pwd`, then press **Enter** to verify that you are in the correct directory.
- 3 Type `./install.wp`, then press **Enter** to access the CD-ROM.

BASICS: The `./` tells UNIX to check the current directory for the `install.wp` executable file.

- 4 If you are asked, select the version of UNIX running on your system, then choose **OK**.

You may experience a delay as the file decompression takes place. The Installation program then displays a summary of the License Agreement governing the use of Corel WordPerfect.

HINT: In a GUI environment where the `DISPLAY` environment variable is set, the GUI Installation program starts, as shown above. In any other environment the character-based Installation program starts instead. Both versions of Corel WordPerfect 7 can be installed using either program.

You have now completed tasks 3 and 4 on the *Installation Checklist*.

- 5 Follow the instructions in *Installing Corel WordPerfect 7 at a GUI Terminal* if you are installing in a GUI environment.

or

Follow the instructions in *Installing Corel WordPerfect 7 at a Character-based Terminal* if you are installing in a character-based environment.

When the installation is finished,

- 6 Unmount the CD-ROM. See your UNIX operating system documentation and man pages for information if you need assistance with this task.

Installing Corel WordPerfect 7 at a GUI Terminal

.....

Installing Corel WordPerfect 7 at a GUI Terminal

IMPORTANT: Before installing the Corel WordPerfect® files, you should have completed steps 1 through 4 on the *Installation Checklist*.

Running the Installation Program

After you have loaded the Corel WordPerfect media and started the Installation program as described in the previous section, the Installation program displays a summary of the License Agreement governing the use of Corel WordPerfect.

- 1 Choose **Yes** to accept the terms of the License Agreement and continue with the installation.

or

Choose **No** to terminate the installation.

HINT: Only a full installation is available for Corel WordPerfect 7 for character-based terminals.

- 2 If necessary, choose **View** to check available disk space on your system, then choose **Close**.
- 3 Select the product(s) to install, select the installation type if necessary, then choose **OK**.

The Requirements and Installation Directory dialog box lists the system requirements for the version of UNIX running on your system as well as the default installation directory.

IMPORTANT: The exact system requirements depend on the version of UNIX running on your system.

At any time during the installation, you can choose **Cancel** to exit the Installation program. Since files are not decompressed and installed until after you have proceeded through all the installation dialog boxes, you can restart the installation without reloading the files.

In any installation dialog box, choose **Help** if you need assistance. Choose **Previous** to back up through previous dialog boxes to verify or change your response(s).

- 4 Refer to your *Planning List* for the Corel WordPerfect installation directory you have chosen.

HINT: Your Corel WordPerfect installation directory is represented by the variable */WPdir* in commands you must type throughout these instructions.

- 5 Choose **OK** to accept the default Corel WordPerfect installation directory.

or

Double-click the Installation Directory text box, type the full pathname of a different directory (for example, */apps/wordperfect*), then choose **OK**.

BASICS: Remember that the window must be active before you can type.

The Products To Install / Installation Type dialog box lets you choose to install just Corel WordPerfect 7 for the X Window System, just Corel WordPerfect 7 for character-based terminals, or both products together.

6 Choose the products you want to install, then click **OK**.

You can also choose the size and resulting capabilities of your final Corel WordPerfect 7 installation (full/medium/minimum).

7 Choose the kind of installation you want.

Choose **Help** for descriptions of the capabilities of the resulting Corel WordPerfect 7 installations.

8 Choose **OK**.

Answering System Information Questions

During the next portion of the installation, you are asked questions about your system. The table below summarizes the questions and responses. The specific questions you must answer depend on the version of UNIX you have and your answers to the previous questions. You may not need to pass through all of these dialog boxes.

HINT: If you are not sure how to answer a question, choose **Help** in the dialog box for an explanation of the question and the results of choosing each response.

Question Topic

How To Respond

Overwrite Corel
WordPerfect XX

The Installation program has detected an existing Corel WordPerfect installation in the Corel WordPerfect 7 installation directory you specified. Choose **Yes** to replace the previous version of Corel WordPerfect with 7.

If you get a permission warning, choose a different Corel WordPerfect 7 installation directory or restart the Installation program after logging in with sufficient permissions to replace the previous version of Corel WordPerfect with 7.

Existing
Application

To use the printer drivers and printer destinations already set up for an existing, related product as default for your Corel WordPerfect 7 installation, you must then provide the full pathname of the directory where the related product is located in the subsequent dialog box. Use **find** if you do not know the directory where your existing product is located.

Related products include Corel WordPerfect 5.1 and Novell® GroupWise™.

Question Topic

How To Respond

License Number

If you are upgrading from a previous version of Corel WordPerfect, use your Corel WordPerfect license number. Otherwise, use the license number on your new Corel WordPerfect 7 license. If you have multiple Corel WordPerfect 7 license numbers, you can enter any one of them during installation.

Type your Corel WordPerfect license number, then choose **OK**.

After Corel WordPerfect is installed, choose **About Corel WordPerfect** from the Help menu to display your license number.

License Management

Enable the License Manager if you need to know who is using a license to run Corel WordPerfect.

Number of Licensed Sessions

If you enabled License Management, double-click the Number of Licensed Sessions text box, type the number of sessions for which you are licensed, then choose **OK**.

Be sure to fill out and send in your Corel WordPerfect registration card(s). You must be a registered user to receive notification of interim releases.

License Server

When you enable License Management, all machines on a network must use the same license server. Choose **OK** to use the machine on which you are installing Corel WordPerfect, or double-click the License Server text box, type the hostname of the machine to use as the Corel WordPerfect license server, then choose **OK**.

See *License Manager* in *Corel Management* in Corel WordPerfect 7 SysAdmin Help (xwpsahlp) for more information.

Edit rc File?

The License Manager must be started each time you reboot your machine. Choose **Yes** to have the Installation program add the necessary lines to the UNIX system boot file (such as `/etc/rc` or `/etc/rc.local`).

If you receive a permission warning, you are not logged in with sufficient permissions to write to the UNIX system boot file. You can add the lines manually after installation by following the instructions in the `README.install` file in the Corel WordPerfect `wpbin` directory.

Languages to Install

The Corel WordPerfect media contains all available languages. Choose one or more languages to install, then choose **OK**.

Not all supported languages are currently available for all versions of UNIX.

Question Topic	How To Respond
Default Language	Select the language to use as the default for all users, then choose OK . See <i>Language Versions</i> in <i>Corel WordPerfect 7</i> in <i>Corel WP Management</i> in Corel WordPerfect 7 SysAdmin Help (xwpsahlp) for more information.
Magic Numbers	Choose Yes if you want the Installation program to add specialized Corel WordPerfect lines to the UNIX <code>/etc/magic</code> file so that the UNIX <code>file</code> command can display file types for Corel WordPerfect files (such as documents, macros, and styles). If you receive a permission warning, you are not logged in with sufficient permissions to write to the UNIX system <code>/etc/magic</code> file. You can add the Corel WordPerfect file information manually after installation by following the instructions in the <code>README.install</code> file in the Corel WordPerfect <code>wpbin</code> directory.

When you are asked to select terminal drivers, you have finished answering the system questions and completed task 5 on the *Installation Checklist*.

Selecting Terminal Drivers

If you are installing Corel WordPerfect 7 for the X Window System only, you do not need to select any terminal drivers in the Terminal Selection dialog box.

- 1 Choose **OK** to skip the Terminal Selection dialog box.

or

If you are installing Corel WordPerfect 7 for character-based terminals along with Corel WordPerfect 7 for the X Window System, refer to *Selecting Terminal Drivers* in *Installing Corel WordPerfect 7 at a Character-based Terminal* for background information about terminal drivers. Because terminal drivers and printer drivers are selected using the same method, use the instructions in the next section to help you select terminal drivers, then choose **OK**.

Selecting Printer Drivers

In the Printer Drivers dialog box, the Corel WordPerfect Printer Drivers list box displays all available printer drivers. Printer drivers are grouped together in printer `.all` files. When you select one printer driver in a `.all` file, the rest of the printer drivers in that `.all` file are also installed.

To select specific printer drivers for installation,

- 1 Double-click a printer driver to add it to the list of printer drivers you want to install.

HINT: To deselect a printer driver, double-click it to remove it from the list. To see the list, choose **List**.

If you need to select a large number of printer drivers, use **Help** for information about how to select multiple printer drivers.

- 2 Select all the printer drivers you listed on the *Planning List*.
 - 3 Choose **OK** when you have finished selecting printer drivers.
- You have now completed task 7 on the *Installation Checklist*.

Assigning Printer Drivers to Destinations

You must set up a printer driver and a destination for each printer on your system that you plan to use with Corel WordPerfect 7 for the X Windows System.

HINT: If the Assign Printer Drivers to Destinations dialog box does not appear, it may mean that you have not yet set up printing at the system level. After you set up printing at the system level, printers can be set up for Corel WordPerfect using the Print Manager. See *Set Up Printers* in *How Do I* in Corel WordPerfect 7 SysAdmin Help (xwpsahlp) for instructions on how to set up printers after installation.

In the Assign Printer Drivers to Destinations dialog box, the Printer Drivers To Install list box displays the printer drivers you just selected.

- 1 Refer to your *Planning List* for your list of printer drivers and the printer destinations assigned to them.
- 2 Select a printer driver, click **Assign**, then specify a destination.

HINT: To delete a printer driver/destination assignment from the Assignments list box, select it, then click **Delete**.

If you need to create assignments for a large number of printer drivers and destinations, use **Help** for information about how to select and assign multiple printer drivers and destinations.

Assignment Setup

Corel WordPerfect print jobs must arrive at the printer *raw*, that is, with no character translation introduced by the UNIX print spooler. For each printer, you can choose between two types of printer destinations that handle this requirement differently.

Destination	Explanation
WPApp Printer Destinations	WPApp printer destinations are set up by the Installation program. The program automatically provides a default spool command (lpr, lp, or qprt), and if you have write permissions, a specialized spooler option is automatically added to the UNIX print spooler file(s) for the printer assigned to that destination. This new option ensures that Corel WordPerfect print jobs arrive at the printer raw.
lpr, lp, and AIX* Printer Destinations	lpr, lp, and AIX printer destinations are set up by you. The Installation program still provides a default spool command (lpr, lp, or qprt), but does <i>not</i> provide a specialized spooler option in the UNIX print spooler file(s). Therefore, it is your responsibility to ensure that Corel WordPerfect print jobs arrive at the printer raw. This is the default destination type.

IMPORTANT: You may want to use a WPAApp printer destination to ensure that Corel WordPerfect print jobs are protected from character translation. Use a lpr, lp, or AIX printer destination if you do not want the Installation program to make changes to the UNIX print spooler file(s).

Once you have assigned a printer driver to a destination,

- 1 Choose **Setup** to open the Assignment Setup dialog box.
- 2 Select **WPAApp** if you want to set up a WPAApp printer destination and have the Installation program set up the raw spooler option for you.

or

Click the Spooler Options text box, then type a spooler option available on your system that will ensure that Corel WordPerfect print jobs arrive at the printer raw.

If you want to change the name users will see in the Select Printer dialog box in Corel WordPerfect,

- 3 Click the Custom Name text box, then type the name you want users to see.

HINT: If you have several printers using the same driver, provide unique custom names that differentiate the printers by location, ownership, or another convention familiar to users.

- 4 Choose **OK** to return to the Assign Printer Drivers to Destinations dialog box.

When you have finished assigning printer drivers to destinations and providing setup information,

- 5 Choose **OK** to continue with the installation.

You have now completed task 8 on the *Installation Checklist*.

Completing the Installation

You have now answered all the questions and provided all the information required to install Corel WordPerfect 7. You can now choose to install Corel WordPerfect or to review and, if necessary, change your selections.

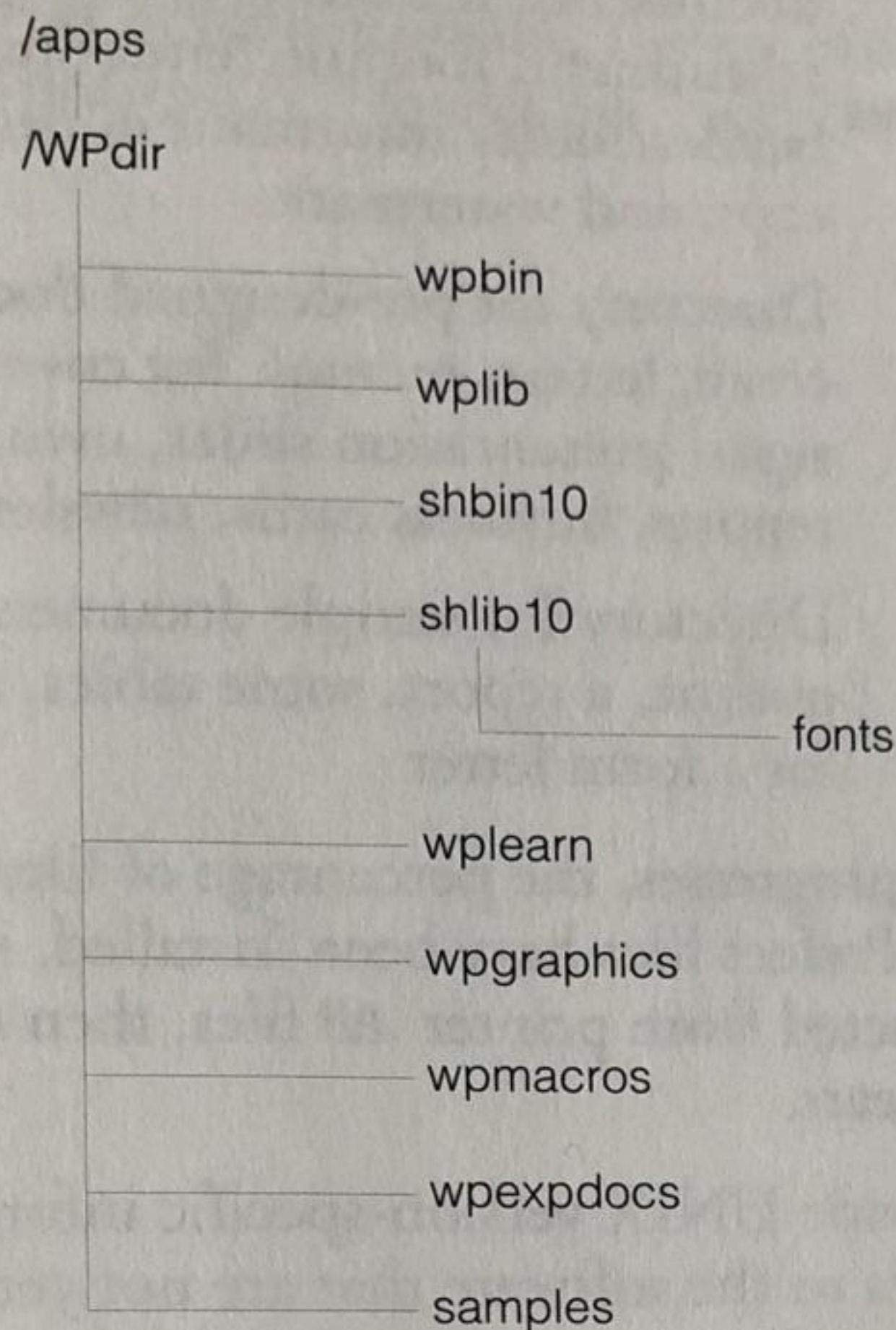
- 1 Choose **OK** to begin decompressing and transferring the files into the Corel WordPerfect directory structure.

or

Select one of the items on the list, then choose **OK** to go back through the dialog boxes and verify or change any of the information you have provided.

After you choose **Install**, the Corel WordPerfect installation directory is created if it does not already exist. Subdirectories are then created under the Corel

WordPerfect installation directory, and various types of files are decompressed and installed in these subdirectories.



Subdirectory	Description
wpbin	Directory for Corel WordPerfect executable files, such as Corel WordPerfect 7 (xwp) and Corel WordPerfect 7 SysAdmin Help (xwpsahlp)
wplib	Directory for Corel WordPerfect data files, such as text, message, help, and error files
shbin10	Directory for WPAApp shared executable files, such as print-related programs and writing tools that can be used by WPAApp products at the same shared-code level (Shared Code 1.0)
shlib10	Directory for WPAApp shared data files, such as printer drivers and fonts that can be used by WPAApp products at the same shared-code level (Shared Code 1.0)
wplearn	Directory containing language-specific subdirectories for Learn files used in the lessons in the <i>Corel WordPerfect User's Guide</i>
wpgraphics	Directory for sample graphics files, including sports, animals, landscapes, organizational, and seasonal themes, as well as a variety of borders

Subdirectory	Description
wpmacros	Directory for macros that automate aspects of formatting documents, including font adjustment, capitalization adjustment, footnote/endnote conversion, special header/footer information, decorative page borders, drop caps, and watermarks
wpexpdocs	Directory for pre-designed document templates to help you create letters, memos, fax cover sheets, awards, invitations, signs, presentation slides, invoices, purchase orders, business reports, business cards, newsletters, and so on
samples	Directory for sample documents, including a newsletter, an outline, a report, some tables, and the form file and data file for a form letter

As the installation progresses, the percentage of files installed is displayed. When all the Corel WordPerfect files have been installed, individual printer drivers (.prs files) are extracted from printer .all files, then the list of Corel WordPerfect README files appears.

README files provide UNIX version-specific information, enhancements, and a summary of changes to the software that are not yet documented in this guide.

2 Select and read any README files that interest you.

These README files are permanently installed for future reference in the Corel WordPerfect wpbin directory, a subdirectory of the Corel WordPerfect installation directory recorded on your *Planning List*.

3 Choose **OK** when you have finished reviewing the README files to exit the Installation program.

If you have not yet done so,

4 Unmount the CD-ROM drive and remove the media from the drive.

IMPORTANT: If you are not logged in as root, the Installation program cannot start the License Manager for you automatically. See *License Manager in Corel WP Management* in Corel WordPerfect 7 SysAdmin Help (xwpsahlp) for instructions.

By following the steps in this section, you have completed tasks 5 through 9 on the *Installation Checklist* and are now ready to test your Corel WordPerfect installation.

Considerations for Systems Running Multiple Versions of UNIX

If you have installed Corel WordPerfect 7 on a machine running a version of UNIX other than the version for which the media is intended, the Installation program could not perform two parts of the installation process.

- ♦ Printer drivers and printer destinations were not created.
- ♦ The license file (license.dat) required by the License Manager was not created. Therefore, the License Manager could not be started.

You must first mount the Corel WordPerfect installation directory to the UNIX machine where the version of UNIX matches media version, then manually set up printers, printer destinations, and the License Manager. See *Print Manager* in *Print Management* and *License Manager* in *Corel WP Management* in Corel WordPerfect 7 SysAdmin Help (xwpsahlp) for instructions.

Testing Your Corel WordPerfect 7 Installation

Now that you have completed steps 1 through 8 on the *Installation Checklist*, you are ready to run Corel WordPerfect® 7 for the X Window System.

Starting Corel WordPerfect 7 for the First Time

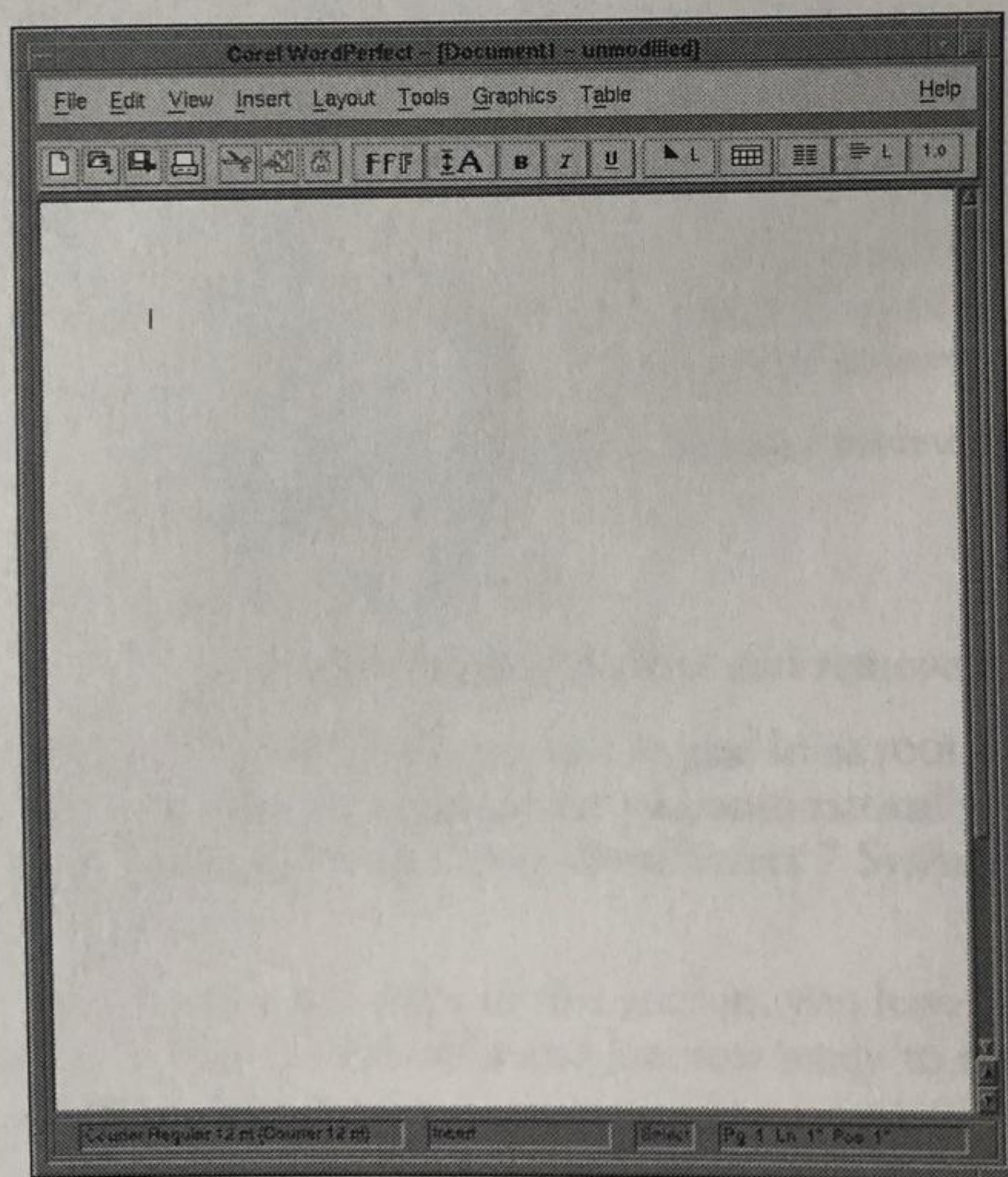
Logged in as the primary Corel WordPerfect administrator at an X station,

- 1 Type `cd /WPdir/wpbin` (where */WPdir* is the full pathname of the Corel WordPerfect installation directory), then press **Enter**.
- 2 Type `./xwp -adm`, then press **Enter** to start Corel WordPerfect. The `-adm` startup option lets you add or edit shared printers and set default Preferences for all users in Corel WordPerfect.

The `./` tells UNIX to check the current directory for the `xwp` executable.

If your Corel WordPerfect installation is properly set up, the Corel WordPerfect program window appears in the upper-right corner of the display.

The Corel WordPerfect document window appears on the left side of the display.

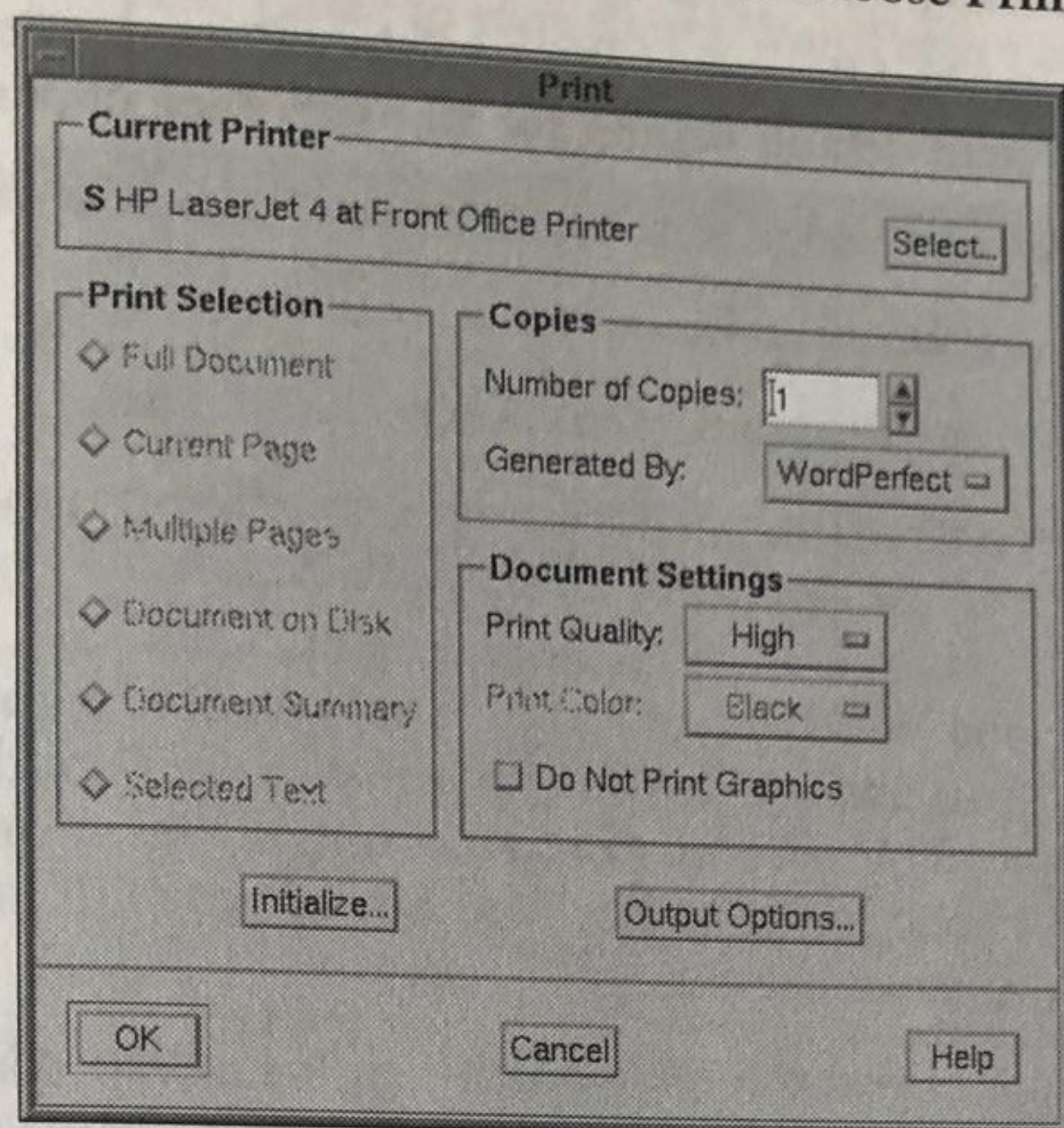


If Corel WordPerfect 7 does not start, you should receive an error message. See *Introducing Corel WordPerfect 7 SysAdmin Help* later in this section for help resolving the problem.

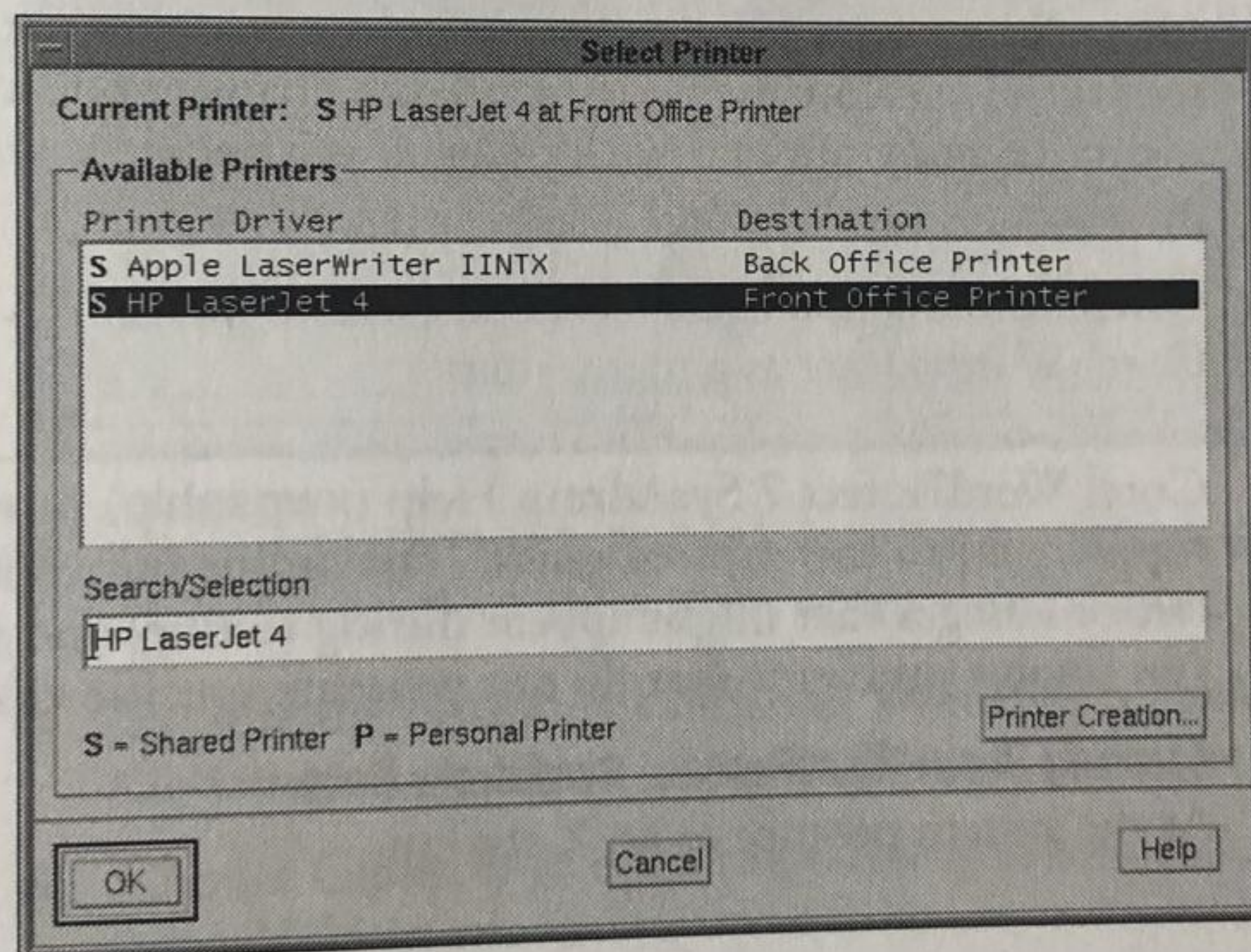
To test printing from Corel WordPerfect 7,

- 3 Type `This is a test.` in the Corel WordPerfect document window.

- 4 Choose the **File** menu, then choose **Print** to display the Print dialog box.



- 5 Choose **Select**, then select a printer to test.



- 6 Choose **OK**. The selected printer appears in the Current Printer box.

- 7 Choose **OK** to send the test document to the printer.

HINT: If no printers are listed, see *Set Up Printers* in *How Do I* in Corel WordPerfect 7 SysAdmin Help (xwpsahlp) for information about adding printers to Corel WordPerfect after installation.

If you receive an error message when you try to print the test document, see *Introducing Corel WordPerfect 7 SysAdmin Help* later in this section for help resolving the problem.

- 8 Repeat steps 4 through 7 to test as many printers as you want.
- 9 Choose the **File** menu, choose **Select Printer**, select the printer you want as the system default printer for all users, then choose **OK**.

Users can later change their default printers as needed.

To exit Corel WordPerfect,

- 10 Choose the **Program** menu, then choose **Exit**.

Once Corel WordPerfect 7 is working for the primary Corel WordPerfect administrator, you are ready to set up UNIX users to run Corel WordPerfect.

Adding Corel WordPerfect to Your Window Manager Menu

To start Corel WordPerfect 7 from your window manager menu, add the command you use at the system prompt to your window manager menu file. For example, in the Motif window manager, the `.mwmrc` file defines the contents of your Motif menu. You can use any UNIX text editor, such as `vi` or `xmeditor`, to make the change.

For example, if your Corel WordPerfect installation directory is `/apps/wp60`, the line you add in your `.mwmrc` file might look like this:

```
"Corel WordPerfect" f.exec "/apps/wp60/wpbin/xwp"
```

After adding such a line to your window manager menu file, you may need to restart the window manager before the change appears on your window manager menu. Logging out and back in again is a simple way to restart the window manager.

Other window managers have comparable menu files that you can modify to add Corel WordPerfect as a menu item.

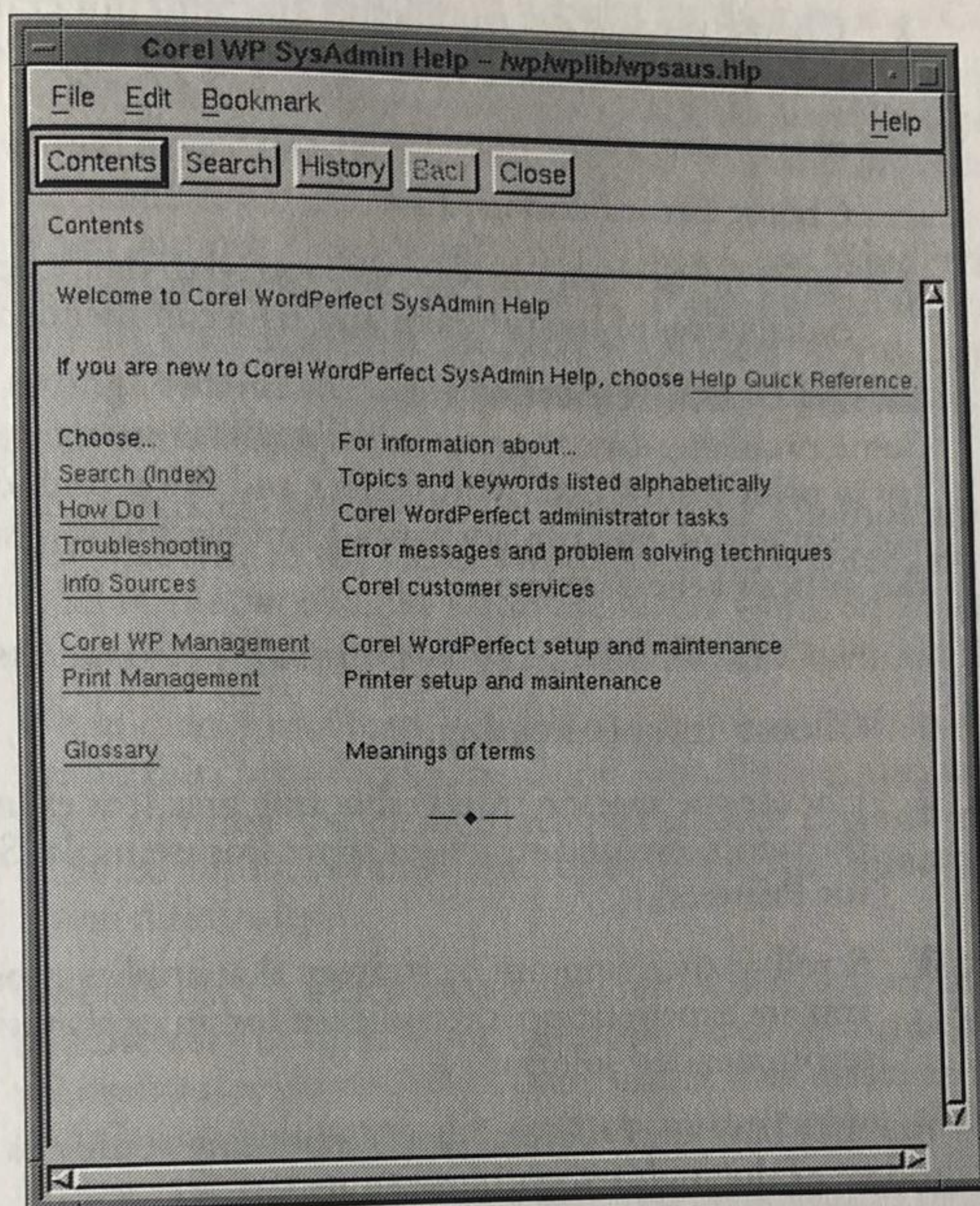
Introducing Corel WordPerfect 7 SysAdmin Help

Corel WordPerfect 7 SysAdmin Help (`xwpsahlp`) provides a detailed online supplement to this printed guide. The online information includes solutions to error messages that might appear during testing, and troubleshooting tips to help you resolve problems that do not generate specific error messages.

Starting Corel WordPerfect SysAdmin Help

At the system prompt at an X station,

- 1 Change to the Corel WordPerfect wpbin directory, type `./xwpsahlp`, then press **Enter** to start Corel WordPerfect SysAdmin Help and display the Contents window.



- 2 Choose **Help Quick Reference** to display information about using the Corel WordPerfect SysAdmin Help menus and buttons.
- 3 Explore the capabilities of Corel WordPerfect SysAdmin Help, then choose **Contents** to return to the main Contents window.
- 4 Choose **Glossary** to open the *Glossary* in a secondary window beside the main Help window.

HINT: You can look up unfamiliar terms in the *Glossary* while reading the Help topic in the main Help window.

Looking Up Error Messages

Where possible, Corel WordPerfect error messages include an explanation of the error and suggested solutions to the problem in the error message dialog box. However, some error messages require more lengthy explanations and steps to resolve the problem. Such error messages are documented in Corel WordPerfect 7 SysAdmin Help.

In the Corel WordPerfect 7 SysAdmin Help Contents window,

1 Choose Troubleshooting.

If you know that the problem is related to a specific area, such as printing,

2 Choose the specific troubleshooting area (for example, **Printers**), then choose the error messages topic (for example, **WPAApp Print Error Messages**).

or

Choose **Error Message List**.

3 Scroll to the error message you received, then click the message for an explanation of the problem and its recommended solution.

Looking Up Troubleshooting Tips

Some problems do not generate a specific error message (for example, when you try to print from Corel WordPerfect and the printer does not respond at all). In such situations, you can try various troubleshooting strategies until you locate the source of the problem.

In the Corel WordPerfect 7 SysAdmin Help Contents window,

1 Choose Troubleshooting.

2 Choose the specific troubleshooting area (for example, **Printers**), then choose the symptoms and strategies topic (for example, **Symptoms and Strategies for Printers**).

3 Scroll to the symptom or strategy that applies most closely to the problem you are experiencing, then click it for an explanation of the problem and its recommended solution.

You may have to try several troubleshooting strategies before you discover the source of the problem and how to resolve it.

Exiting Corel WordPerfect 7 SysAdmin Help

When you have finished reading topics in Corel WordPerfect 7 SysAdmin Help

1 Choose the File menu, then choose **Exit**.

or

Choose **Close** on the Button Bar.

Throughout this guide, you are directed to specific parts of Corel WordPerfect SysAdmin Help for more in-depth information than is provided in the printed documentation. See *Finding More Documentation Online* for a listing of the contents of Corel WordPerfect 7 SysAdmin Help and for further instructions on its use.

Setting Up UNIX Users to Run Corel WordPerfect 7

As the primary Corel WordPerfect administrator, you need to perform several setup tasks for users to make it easier for them to start Corel WordPerfect.

IMPORTANT: Before setting up UNIX users to run Corel WordPerfect 7, you should have completed tasks 1 through 9 on the *Installation Checklist*.

Setting Up Defaults for Corel WordPerfect 7 Users

When you run Corel WordPerfect 7 as a Corel WordPerfect administrator, your choices set the defaults for all users. If you add printers to Corel WordPerfect, they are shared printers, available to all users. If you change Preferences, your settings become the default settings for all users who do not already have personal settings files.

Preferences chosen by a Corel WordPerfect administrator are stored in the `.wp7x.set` file in the Corel WordPerfect `wplib` directory. Shared printers are listed in the `.wpc7x.set` file in the Corel WordPerfect `shlib10` directory. Printer drivers (`.prs` files) for shared printers are also stored in the `shlib10` directory.

When users start Corel WordPerfect for the first time, Corel WordPerfect uses the defaults provided by the Corel WordPerfect administrator. When users select a printer and change Preferences, their personal choices are stored in personal `.wp7x.set` and `.wpc7x.set` files in the `.wpcorp` subdirectory of their home directories.

IMPORTANT: Once users have created personal settings files in the `.wpcorp` subdirectory of their home directories, changes made by a Corel WordPerfect administrator do not affect them unless they delete their personal `.wp7x.set` and `.wpc7x.set` files or use the `-restore` startup option so that Corel WordPerfect accesses the system default settings again.

Setting Default Preferences

The Preferences feature of Corel WordPerfect lets you customize the functioning of Corel WordPerfect. As a Corel WordPerfect administrator, you can customize the functioning of Corel WordPerfect for all users in many ways, including:

- ♦ Specifying default locations of files (such as common directories for documents, graphics, macros, styles, and spreadsheets)
- ♦ Selecting or creating the defaults for the Button Bar, Power Bar, Status Bar, and/or keyboard layout
- ♦ Establishing printer restrictions (such as preventing specified users and/or groups from initializing printers, adding personal printers, using Printer Control options, or setting their print job priority above a specified maximum)

Setting Up Shared Printers

When you chose a printer in *Testing Your Corel WordPerfect 7 Installation*, that printer became the initial default printer for all Corel WordPerfect users. The printer setup you performed during installation is sufficient to let you print from Corel WordPerfect, but you may want to customize the way shared printers are set up, including:

- ♦ Selecting any third-party fonts you have installed in each printer so that users can select them in Corel WordPerfect
- ♦ Installing additional HP or PostScript fonts on your system and adding them to each printer driver
- ♦ Selecting the default font for each printer driver
- ♦ Selecting a sheet feeder for any printers equipped with one
- ♦ Providing customized paper size and type options for special forms needed by users

Since regular users cannot modify shared printers, you must make sure all printers are completely set up and ready for use after installation.

Testing Corel WordPerfect 7 for Each UNIX User

To ensure that each of your users can access Corel WordPerfect 7,

- 1 Explain to users how they should start Corel WordPerfect 7 (for example, start Corel WordPerfect from the command line, use a script file, or choose it from the window manager menu).
- 2 Have each user log in and try to start Corel WordPerfect using the approach you have set up.

If Corel WordPerfect fails to start for a user,

- 3 Have that user change to the Corel WordPerfect `wpbin` directory, type `./xwp`, then press **Enter** to start Corel WordPerfect from the command line so that an error message can be seen.

Once users can start Corel WordPerfect,

- 4 Have each user select a printer and print a test document.

See *Introducing Corel WordPerfect 7 SysAdmin Help* in *Testing Your Corel WordPerfect 7 Installation* for help solving any problems that arise.

Providing Corel WordPerfect 7 Learn Files for Users

The `wplearn` directory in the Corel WordPerfect installation directory contains language-specific subdirectories with Learn files for use with the lessons in the *Corel WordPerfect User's Guide*. Users do not have write permissions to the `wplearn` directory or its subdirectories because the Learn files must be kept in their original state in order to work with the lessons.

To make the Learn files available so that users can retrieve them into Corel WordPerfect, work through the lessons, and save their work, you need to provide a copy of the Learn files in a `lessons` subdirectory of each user's home directory.

and make sure users have access to the electronic copy of the *Corel WordPerfect User's Guide*.

Completing Optional Corel WordPerfect 7 Setup Tasks

Additional option tasks for setting up Corel WordPerfect 7 include:

- ♦ Using Corel WordPerfect startup options
- ♦ Setting Corel WordPerfect environment variables
- ♦ Authorizing Corel WordPerfect administrators
- ♦ Enabling mail in Corel WordPerfect
- ♦ Running Corel WordPerfect in multiple languages
- ♦ Running Corel WordPerfect on a remote system
- ♦ Remote mounting the Corel WordPerfect directories

See *Corel WordPerfect 7* in *Corel WP Management* in Corel WordPerfect 7 SysAdmin Help (xwpsahlp) for more information about these optional tasks.

Installing Corel WordPerfect 7 at a Character-based Terminal

.....

Installing Corel WordPerfect 7 at a Character-based Terminal

IMPORTANT: Before installing the Corel® WordPerfect® files, you should have completed steps 1 through 4 on the *Installation Checklist*.

Running the Installation Program

After you have loaded the Corel WordPerfect media and started the Installation program as described in *Loading the Corel WordPerfect Media*, the Installation program displays a summary of the License Agreement governing the use of Corel WordPerfect.

- 1 Press **y** for Yes, then press **Enter** to accept the terms of the License Agreement and continue with the installation.

or

Press **n** for No, then press **Enter** to terminate the installation.

The Products To Install screen lets you install just Corel WordPerfect 7 for the X Windows System, just Corel WordPerfect 7 for character-based terminals, or both products together.

- 2 Type the number for the product(s) to install, then press **Enter**.

If you are installing both versions of Corel WordPerfect 7, the Installation Type screen lets you choose the size and resulting capabilities of your final Corel WordPerfect 7 installation (full/medium/minimum).

HINT: Press **?**, then press **Enter** for descriptions of the capabilities of the resulting Corel WordPerfect 7 for the X Windows System installations. For Corel WordPerfect 7 for character-based terminals, only a full installation is available.

- 3 If you are installing Corel WordPerfect 7 for the X Windows System, type the number for the type of Corel WordPerfect 7 installation you want, then press **Enter**.

At any time during the installation, you can press **q** for Quit, then press **Enter** to exit the Installation program. Since files are not decompressed and installed until after you have proceeded through all the installation dialog boxes, you can restart the installation without reloading the files.

In any installation screen, press **?**, then press **Enter** to display Help information.

- 4 Refer to your *Planning List* for the Corel WordPerfect installation directory you have chosen.

HINT: Your Corel WordPerfect installation directory is represented by the variable */WPdir* in commands you must type throughout these instructions.

- 5 Type the full pathname of a different directory (for example, */apps/corel*), then press **Enter**.

Answering System Information Questions

During the next portion of the installation, you are asked questions about your system. The table below summarizes the questions and responses. The specific questions you must answer depend on the version of UNIX you have and your answers to the previous questions.

HINT: If you are not sure how to answer a question, press **?**, then press **Enter** in the dialog box for an explanation of the question and the results of choosing a response.

Question Topic	How To Respond
Overwrite Corel WordPerfect XX	<p>The Installation program has detected an existing Corel WordPerfect installation in the Corel WordPerfect 7 installation directory you specified. Type y for Yes, then press Enter to replace the previous version of Corel WordPerfect with 7.</p> <p>If you get a permission warning, choose a different Corel WordPerfect 7 installation directory or restart the Installation program after logging in with sufficient permissions to replace the previous version of Corel WordPerfect with 7.</p>
Existing Application	<p>You can use the printer drivers and printer destinations already set up for an existing, related product as defaults for your Corel WordPerfect 7 installation. Related products include Corel WordPerfect 5.1 and Novell GroupWise®.</p> <p>Type the full pathname of the directory where the related product is located, then press Enter. Or, just press Enter to continue.</p>
License Number	<p>If you are upgrading from a previous version of Corel WordPerfect, use your Corel WordPerfect license number. Otherwise, use the license number on your new Corel WordPerfect 7 license. If you have multiple Corel WordPerfect 7 license numbers, you can enter any one of them during installation.</p> <p>Type your Corel WordPerfect license number, then press Enter. Press y for Yes, then press Enter to confirm your license number.</p> <p>After Corel WordPerfect is installed, press Help to view your license number at the top of the Help screen.</p>

Question Topic

Number of Licensed Sessions

How To Respond

Type the number of sessions for which you are licensed, then press **Enter**. Press **y** for Yes, then press **Enter** to confirm the number of sessions.

Be sure to fill out and send in your Corel WordPerfect registration card(s). You must be a registered user to receive notification of interim releases.

License Server

All machines on a network must use the same license server. Press **Enter** to use the machine on which you are installing Corel WordPerfect, or type the hostname of the machine to use as the Corel WordPerfect license server, then press **Enter**. Press **y** for Yes, then press **Enter** to confirm the license server.

See *License Manager* in *Corel WP Management* in Corel WordPerfect 7 SysAdmin Help (wpsahlp) for more information.

Edit rc File?

The License Manager must be started each time you reboot your machine. Press **y** for Yes, then press **Enter** to have the Installation program add the necessary lines to the UNIX system boot file (such as `/etc/rc` or `/etc/rc.local`).

If you receive a permission warning, you are not logged in with sufficient permissions to write to the UNIX system boot file. You can add the lines manually after installation by following the instructions in the `README.install` file in the Corel WordPerfect `wpbin` directory.

Languages to Install

The Corel WordPerfect media contains all available languages. Type the two-letter language codes for one or more languages to install, then press **Enter**. Press **y** for Yes, then press **Enter** to confirm your selection(s).

Not all supported languages are currently available for all versions of UNIX.

Default Language

Type the two-letter language code for the language to use as the default for all users, then press **Enter**. Press **y** for Yes, then press **Enter** to confirm your selection.

See *Language Versions* in *Corel WordPerfect 7* in *Corel WP Management* in Corel WordPerfect 7 SysAdmin Help (wpsahlp) for more information.

Question Topic

Magic Numbers

How To Respond

Press **y** for Yes, then press **Enter** if you want the Installation program to add specialized Corel WordPerfect lines to the UNIX `/etc/magic` file so that the UNIX `file` command can display file types for Corel WordPerfect files (such as documents, macros, and styles).

If you receive a permission warning, you are not logged in with sufficient permissions to write to the UNIX system `/etc/magic` file. You can add the Corel WordPerfect file information manually after installation by following the instructions in the `README.install` file in the Corel WordPerfect `wpbin` directory.

When you are asked to select terminal drivers, you have finished answering the system questions and completed task 5 on the *Installation Checklist*.

Selecting Terminal Drivers

The Installation program displays all the terminal drivers (`.trs` files) provided on the media. If you provided another directory to get related product defaults from, existing terminal drivers are already selected for installation. If you are reinstalling, the Installation program creates backup copies of existing `.trs` files with a `.bak` extension before installing the new `.trs` files.

If several terminal drivers are listed for the same make and model of a terminal, select all of them. For a large installation with sufficient disk space, use **Select All** to install all the terminal drivers so they are available when you add new terminals to your system. Installing all terminal drivers requires about 3M of disk space.

The Terminal Driver Selection screen appears as shown below.

Select all of the terminals where this Corel product will be used:		
Selected?	Terminal Name	
==>NO	ADDS 2020	
NO	ADDS 2025	
NO	ADDS 3220	
NO	ADDS A2	
NO	Altos III	
NO	Altos V	
NO	Altos VII (ascii style keyboard)	
NO	Altos VII (enhanced PC style keyboard)	
NO	AT&T 605	
NO	AT&T 615 CMT (color display, 98-key keyboard)	
NO	AT&T 615 CMT (color display, 102-key keyboard)	
NO	AT&T 615 MT (monochrome display, 98-key keyboard)	
NO	AT&T 615 MT (monochrome display, 102-key keyboard)	
NO	AT&T 615 MT (monochrome display, 103-key keyboard)	
NO	AT&T 620 MTG (98-key keyboard)	
NO	AT&T 705	
u = Up s/y = select I = Terminal Information		
d = Down S/n = Deselect ? = Help Information		
U = PageUp * = Select All Q = Quit Installation		
D = PageDown 0 = Deselect All C = Continue Installation		

To display the list of terminals correctly on your particular terminal, the Installation program checks the **TERM** environment variable. If the current **TERM** setting is not found in the terminfo database on your system, you are prompted to supply a valid **TERM** setting.

BASICS: UNIX uses the **TERM** environment variable to access the terminfo database, which provides the codes necessary to communicate with your particular type of terminal. If the **TERM** environment variable is not set correctly, your terminal may not be able to display the Terminal Driver Selection screen or respond to keystrokes in the expected manner.

- 1 If you are prompted, type the **TERM** setting for your terminal, press **Enter**, then continue with the installation.

or

If you do not know the correct **TERM** setting, type **q** for Quit, then press **Enter** to exit the Installation program. Determine and set the correct **TERM** setting, then restart the Installation program.

IMPORTANT: If you do not know how to work with the terminfo database or how to set the **TERM** environment variable, refer to your operating system documentation.

To select a terminal driver on the Terminal Driver Selection screen, you must first move the cursor to it. Because the Installation program is designed to run on any terminal, typical cursor movement keys (for example, Up Arrow, Down Arrow, PageUp, and PageDown) are not available here. Instead, use the letter commands listed at the bottom of the screen to move the cursor to each terminal driver to select it. For example,

- 2 Press lowercase **d** to move the cursor down line by line.

or

Press uppercase **D** to move down through the list screen by screen.

- 3 Refer to the *Planning List* for the list of terminals on your system.

After moving the cursor to a terminal driver you want to install,

- 4 Press lowercase **s** to select it.

A screen appears showing the terminal driver file that will be installed. When you run Corel WordPerfect 7, you must set the **WPTERM7** environment variable to indicate the terminal driver to access. The **WPTERM7** setting for each terminal driver is the same as the terminal driver filename, but without the **.trs** extension.

- 5 Write the **WPTERM7** setting for the terminal driver on the *Planning List*.
- 6 Press any key to return to the Terminal Driver Selection screen.
- 7 Select all the terminal drivers you want to use with Corel WordPerfect 7.

IMPORTANT: If you are planning to run Corel WordPerfect 7 on an X station rather than a character-based terminal, be sure to select at least one of the X Windows terminal drivers.

When you are finished selecting terminal drivers,

- 8** Press **c** for Continue, then press **y** for Yes to confirm that you are ready to continue.

IMPORTANT: After you finish installing Corel WordPerfect, use the Terminal Setup utility (**wptset**) to coordinate **WPTERM7** settings with specific users or terminals. Use Corel WordPerfect 7 SysAdmin Help (**wpsahlp**) for more information.

You have now completed task 6 on the *Installation Checklist*.

Selecting Printer Drivers

Printer drivers are grouped together in printer **.all** files. When you select one printer driver in a **.all** file, the rest of the printer drivers in that **.all** file are also installed.

As with terminal drivers, if you provided another directory to get related product defaults from, existing printer drivers are already selected for installation. If you are reinstalling, the Installation program creates backup copies of existing printer **.all** files with a **.bak** extension before installing the new printer **.all** files. Printer drivers (**.prs** files), however, are not automatically extracted from the new **.all** files during installation.

The Printer Driver Selection screen has the same appearance and functionality as the Terminal Driver Selection screen.

Select all of the printers that will be used with this Corel product:		
Selected?	Printer Name	
==>No	Acer LP-76	
No	AEG Olympia Compact R0	
No	AEG Olympia ESW 2000	
No	AEG Olympia Laserstar 6	
No	AEG Olympia Laserstar 6e	
No	AEG Olympia NP 136 SE	
No	AEG Olympia NP 136-24	
No	AEG Olympia NP 136-24 (Additional) (C)	
No	AEG Olympia NP 30	
No	AEG Olympia NP 80 SE	
No	AEG Olympia NP 80-24	
No	AEG Olympia NP 80-24 (Additional) (C)	
No	AEG Olympia NPC 136-24	
No	AEG Olympia NPC 136-24 (Additional) (C)	
No	AEG Olympia Startype	
No	AGFA Compugraphic 9400PS	
u = Up s/y = Select ? = Help Information d = Down S/n = Deselect Q = Quit Installation U = PageUp * = Select All C = Continue Installation D = PageDown 0 = Deselect All		

- 1** Refer to the *Planning List* for the list of printer drivers to install.
- 2** Use the same procedures to select printer drivers that you used to select terminal drivers. See *Selecting Terminal Drivers* earlier in this section for specific instructions.

You have now completed task 7 on the *Installation Checklist*.

After selecting printer drivers to install, you must set up a printer driver and destination for each printer you plan to use with Corel WordPerfect 7. The Printer Driver/Destination Assignments screen appears as shown below.

Move to a printer driver and press 'a' to assign destinations for that driver.

Printer Driver	Destination	Type
=> Epson Stylus 800	None	None
HP LaserJet 4	None	None
Xerox 4235	None	None

u = Up D = PageDown a = Assign Destination(s) ? = Help
 d = Down r = Rename Driver C = Continue Installation
 U = PageUp t = Toggle Type Q = Quit Installation

The cursor appears at the top of the Printer Driver list.

- 1 Refer to the *Planning List* for the list of printers and destinations you plan to use for Corel WordPerfect 7.
- 2 Move the cursor to a printer driver, then press a for Assign Destination(s).

Move to destination(s) and press 's' to select.

Printer Driver: Epson Stylus 800

=> lp1 (Lp)
 lp2 (Lp)
 lp3 (Lp)
 None

<Enter> = Accept assignment(s)

u = Up	D = PageDown	* = Select all	Q = Quit Installation
d = Down	s/y = Select	0 = Deselect all	? = Help
U = PageUp	S/n = Deselect	o = Options	

The cursor appears at the top of the list of available destinations.

- 3 Move the cursor to the destination where the printer driver will be used, then press **s** for Select to mark the destination.
- 4 Repeat step 3 for all destinations that use the same printer driver.
- 5 Press **Enter** to return to the Printer Driver/Destination Assignments screen.

Each printer driver/destination assignment you created now appears separately in the list. The printer driver name is the name users will see when selecting a printer in Corel WordPerfect. If the same printer driver is used for several destinations, give each printer a unique name.

- 6 Move the cursor to the printer driver, press **r** for Rename Driver, edit or replace the printer driver name to make it unique, then press **Enter**.

Corel WordPerfect print jobs must arrive at the printer *raw*, that is, with no character translation introduced by print filters (such as those specified in `/etc/printcap`). For each printer, you can choose between two types of printer destinations that handle this requirement differently.

Destination	Explanation
WPAApp Printer Destinations	WPAApp printer destinations are set up by the Installation program. The program automatically provides a default spool command (<code>lpr</code> , <code>lp</code> , or <code>qprt</code>), and if you have write permissions, a specialized spooler option is automatically added to the UNIX print spooler file(s) for the printer assigned to that destination. This new option ensures that Corel WordPerfect print jobs arrive at the printer <i>raw</i> .
<code>lpr</code> , <code>lp</code> , and AIX Printer Destinations	<code>lpr</code> , <code>lp</code> , and AIX printer destinations are set up by you. The Installation program still provides a default spool command (<code>lpr</code> , <code>lp</code> , or <code>qprt</code>), but does <i>not</i> provide a specialized spooler option in the UNIX print spooler file(s). Therefore, it is your responsibility to ensure that Corel WordPerfect print jobs arrive at the printer <i>raw</i> . This is the default destination type.

IMPORTANT: You may want to use a WPAApp printer destination to ensure that Corel WordPerfect print jobs are protected from character translation. Use a `lpr`, `lp`, or AIX printer destination if you do not want the Installation program to make changes to the UNIX print spooler file(s).

Once you have assigned a printer driver to a destination,

- 7 If you want the Installation program to handle the destination setup (with spooler command and specialized option in the UNIX print spooler file), move the cursor to the printer driver/destination assignment, then press **t** for Toggle to change the destination type to WPAApp.

or

Leave the default selection of UNIX printer, and, if necessary on your system, provide a spooler option so that Corel WordPerfect print jobs arrive

at the printer raw. Move the cursor to the printer driver/destination assignment, press **a** for Assign Destination, move the cursor to the destination, press **o** for Options, type the spooler option(s), then press **Enter**.

8 Repeat steps 2 through 7 for each printer driver listed in the Printer Driver/Destination Assignments screen.

HINT: To delete a printer driver/destination assignment from the list, move the cursor to it, press **a** for Assign Destination(s), move the cursor to None, press **s** for Select, then press **Enter** to return to the Printer Driver/Destination Assignments screen. The unwanted assignment is removed from the list.

When you are finished assigning printer drivers to destinations,

9 Press **c** for Continue, then press **y** for Yes to confirm that you are ready to continue.

You have now completed task 8 on the *Installation Checklist*.

You have now answered all the questions and provided all the information required to install Corel WordPerfect 7. You can now choose to install Corel WordPerfect or to review, and, if necessary, change your selections.

Install or Review

Would you like to begin the installation now or go back and review your selections?

I = Install
R = Review
Q = Quit

Enter Selection: █

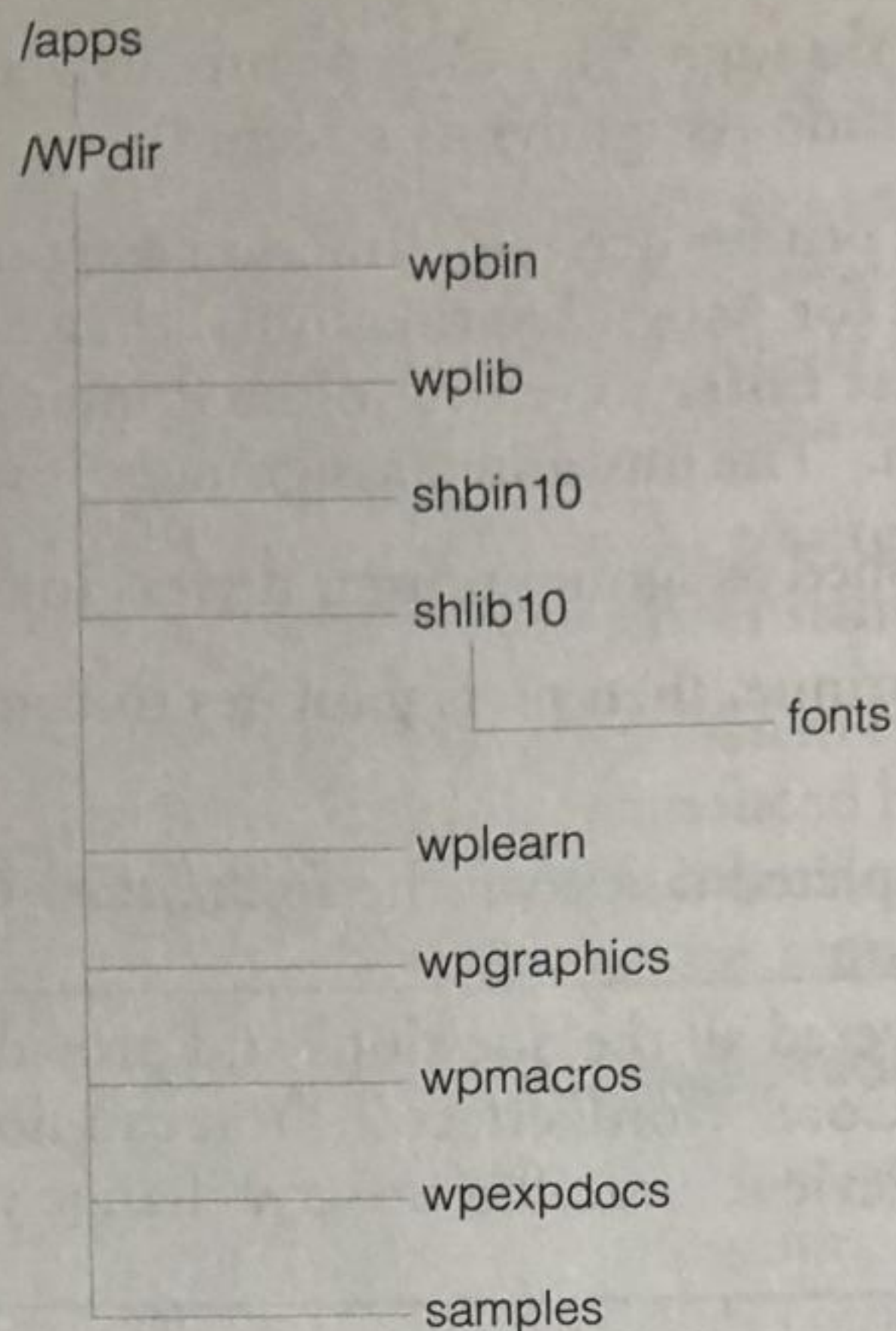
1 Choose **OK** to begin decompressing and transferring the files into the Corel WordPerfect directory structure.

or

Select an item from the list and choose **OK** to go back through the installation questions and verify or change any of the information you have provided.

After you choose **Install**, the Corel WordPerfect installation directory is created if it does not already exist. Subdirectories are then created under the Corel

WordPerfect installation directory, and various types of files are decompressed and installed in these subdirectories.



Subdirectory	Description
wpbin	Directory for Corel WordPerfect executable files, such as Corel WordPerfect 7 (wp) and Corel WordPerfect 7 SysAdmin Help (wpsahlp)
wplib	Directory for Corel WordPerfect data files, such as text, message, help, and error files
shbin10	Directory for WPAApp shared executable files, such as printer-related programs and writing tools that can be used by WPAApp products at the same shared-code level (Shared Code 1.0)
shlib10	Directory for WPAApp shared data files, such as printer drivers and fonts that can be used by WPAApp products at the same shared-code level (Shared Code 1.0)
wplearn	Directory containing language-specific subdirectories for Learn files used in the lessons in the <i>Corel WordPerfect User Guide</i>
wpgraphics	Directory for sample graphics files, including sports, animals, landscapes, organizational, and seasonal themes, as well as a variety of borders

Subdirectory	Description
wpmacros	Directory for macros that automate aspects of formatting documents, including font adjustment, capitalization adjustment, footnote/endnote conversion, special header/footer information, decorative page borders, drop caps, and watermarks
wpexpdocs	Directory for pre-designed document templates to help you create letters, memos, fax cover sheets, awards, invitations, signs, presentation slides, invoices, purchase orders, business reports, business cards, newsletters, and so on
samples	Directory for sample documents, including a newsletter, an outline, a report, some tables, and the form file and data file for a form letter

As the installation progresses, the percentage of files installed is displayed. When all the Corel WordPerfect files have been installed, individual printer drivers (.prs files) are extracted from printer .all files, then the list of Corel WordPerfect README files appears.

README files provide UNIX version-specific information, enhancements, and a summary of changes to the software that are not yet documented in this guide.

- 2 Type its number from the list, then press **Enter** to read any README files that interest you. Press the space bar or **Enter** to scroll through the text. At the end of the information, press **Enter** to return to the list of README files.

HINT: To leave a README file without scrolling to the end, press **q** for Quit, then press **Enter**.

These README files are permanently installed for future reference in the Corel WordPerfect wpbin directory, a subdirectory of the Corel WordPerfect installation directory recorded on your *Planning List*.

- 3 Press **q** for Quit, then press **Enter** for Quit when you have finished reviewing the README files to exit the Installation program.

If you have not yet done so,

- 4 Remove the media from the drive.

IMPORTANT: If you are not logged in as root, the Installation program cannot start the License Manager for you automatically. See *License Manager* in *Corel WP Management* in Corel WordPerfect 7 SysAdmin Help (wpsahlp) for instructions.

By following the steps in this section, you have completed tasks 5 through 9 on the *Installation Checklist* and are now ready to test your Corel WordPerfect installation.

Considerations for Systems Running Multiple Versions of UNIX

If you have installed Corel WordPerfect 7 on a machine running a version of UNIX other than the version for which the media is intended, the Installation program could not perform two parts of the installation process.

- ♦ Printer drivers and printer destinations were not created.
- ♦ The license file (license.dat) required by the License Manager was not created. Therefore, the License Manager could not be started.

You must first mount the Corel WordPerfect installation directory to the UNIX machine where the version of UNIX matches media version, then manually set up printers, printer destinations, and the License Manager. See *Print Manager*, *Print Management* and *License Manager* in *Corel WP Management* in Corel WordPerfect 7 SysAdmin Help (wpsahlp) for instructions.

Testing

Starting Co
WordPerfect
Character-
Terminal

Testing Your Corel WordPerfect 7 Installation

Now that you have completed steps 1 through 8 on the *Installation Checklist*, you are ready to run Corel® WordPerfect® 7 for character-based terminals.

Make sure you are logged in as the primary Corel WordPerfect administrator on a character-based terminal.

IMPORTANT: If you are planning to run Corel WordPerfect 7 for character-based terminals on an X station rather than a character-based terminal, skip ahead to *Starting Corel WordPerfect 7 on an X Station* later in this section.

To set your WPTERM7 environment variable for the type of character-based terminal you are using,

- 1 Check the *Planning List* for the WPTERM7 setting for the terminal you are using.

Below is a table of typical settings for consoles and common character-based terminals.

Terminal	WPTERM7 Setting	Comments
AT&T 6386 Console	att6386	monochrome
	att6386col	color
	386net	network login
	386netcol	network color
Digital*VT 100	vt102	no function keys
	vt102alt	uses function keys
DigitalVT 220/240	vt220	20 function keys
IBM 3151	ibm3151_31	Send/Reset keys
	ibm3151_51	Ctrl/Alt keys
Interactive Console	interaon	monochrome
	interacol	color
SCO UNIX Console	scocons	monochrome
	scoconscol	color
	sconet	network login
	sconetcol	network color
WYSE* 60	wyse60epc	12 function keys
	wyse60asc	20 function keys
	wyse60at	10 function keys

HINT: For a complete list of terminals and terminal emulation modes that Corel WordPerfect 7 supports, see the README.trs file in the Corel WordPerfect wpbin directory. Each terminal is listed with its WPTERM7 setting and any other information you might need to set up the terminal correctly.

- 2 Type `setenv WPTERM7 setting` (where *setting* is the terminal setting for the terminal driver you want to use), then press **Enter** to set the `WPTERM7` environment variable.

or

If you are using the Bourne shell, type `WPTERM7=settingexport WPTERM7`, then press **Enter**.

BASICS: The `WPTERM7` environment variable must be typed in uppercase letters. If you are not sure which shell you are in, try the first command. If you receive an error message, use the second command.

- 3 Type `env | grep WPTERM7` or `echo $WPTERM7`, then press **Enter** to verify that it has been set correctly.
- 4 Type `cd /WPdir/wpbin` (where */WPdir* is the full pathname of the Corel WordPerfect installation directory), then press **Enter**.

HINT: When Corel WordPerfect 7 starts, the opening screen will display the keystroke to use to display Help information for your particular type of terminal. As you start Corel WordPerfect 7 in the next step, make a note of the Help keystroke for your terminal.

- 5 Type `./wp -adm`, then press **Enter** to start Corel WordPerfect. The `-adm` startup option lets you add or edit shared printers and provide default setup information for all users in Corel WordPerfect.

BASICS: The `./` tells UNIX to check the current directory for the `wp` executable.

If Corel WordPerfect starts successfully, skip to *Testing Corel WordPerfect 7* later in this section. If Corel WordPerfect fails to start, skip instead to *Resolving Problems Starting Corel WordPerfect 7*.

Starting Corel WordPerfect 7 for Character-Based Terminals on an X Station

With proper setup, you can run Corel WordPerfect 7 in a window on an X station instead of on a character-based terminal. An X station is any display station capable of providing a graphical user interface (GUI). This might include a windowing workstation, X terminal, or other hardware (such as a PC or Macintosh) with an X emulator.

Two actions must be taken for Corel WordPerfect 7 to run on an X station:

- ♦ Set your `WPTERM7` environment variable to a setting appropriate for a GUI environment.
- ♦ Open a specialized `wpxtool` window and run Corel WordPerfect 7 in that window.

IMPORTANT: The `wpxtool` window makes mouse functionality possible in Corel WordPerfect 7.

Make sure you are logged in as the primary Corel WordPerfect administrator on an X station.

To set your **WPTERM7** environment variable for the type of GUI environment you are running Corel WordPerfect 7 in,

- 1 Check the *Planning List* for the **WPTERM7** setting for the terminal you are using.

Below is a table of common settings for X stations.

Terminal	WPTERM7 Setting	Comments
Digital DECStation*	dec_mono	VT-style layout with
	dec_color	20 function keys
	dec_mon_pc	PC-style layout with
	dec_col_pc	12 function keys
HP 9000 Workstation	hp_mono	HP-style layout with
	hp_color	8 function keys
SCO Open Desktop*	xmono	PC-style layout with
	xcolor	12 function keys
Sun SPARCstation*	gui_mono	Sun-style layout with
	gui_color	12 function keys
X Station (generic)	xmono	PC-style layout with
	xcolor	12 function keys

HINT: For a list of terminals and terminal emulation modes that Corel WordPerfect 7 supports, see the **README.trs** file in the Corel WordPerfect **wpbin** directory. Each terminal is listed with its **WPTERM7** setting and any other information you might need to set up the terminal correctly.

- 2 Type **setenv WPTERM7 *setting*** (where *setting* is the terminal setting for the terminal driver you want to use), then press **Enter** to set the **WPTERM7** environment variable.

or

If you are using the Bourne shell, type **WPTERM7=*setting*;export WPTERM7**, then press **Enter**.

BASICS: The **WPTERM7** environment variable must be typed in uppercase letters. If you are not sure which shell you are in, try the first command. If you receive an error message, use the second command.

- 3 Type **env | grep WPTERM7** or **echo \$WPTERM7**, then press **Enter** to verify that it has been set correctly.
- 4 Type **cd /WPdir/wpbin** (where */WPdir* is the full pathname of the Corel WordPerfect installation directory), then press **Enter**.

HINT: When Corel WordPerfect 7 starts, the opening screen will display the keystroke to use to display Help information for your particular type of terminal. As you start Corel WordPerfect 7 in the next step, make a note of the Help keystroke for your terminal.

- 5 Type `../shbin10/wpxtool -e ./wp -adm`, then press **Enter** to start Corel WordPerfect. The `-adm` startup option lets you add or edit shared printers and provide default setup information for all users in Corel WordPerfect.

BASICS: The `./` tells UNIX to check the current directory for the `wp` executable. The `wpxtool` executable is located in the neighboring `shbin10` directory. You can simplify the command by adding the `wpbin` and `shbin10` directories to your path or by creating a script file to start Corel WordPerfect 7 on an X station.

If Corel WordPerfect starts successfully, skip to *Testing Corel WordPerfect 7* later in this section. If Corel WordPerfect fails to start, continue with *Resolving Problems Starting Corel WordPerfect 7*.

Resolving Problems Starting Corel WordPerfect 7

If Corel WordPerfect 7 does not start, you may receive an error message. If you receive the message "Error: Could not open the file -- *setting.trs*", your `WPTERM7` setting does not match any of the terminal drivers available in the Corel WordPerfect `shlib10` directory. Check the `shlib10` directory for available `.trs` files and make sure the `WPTERM7` environment variable is set to match one of them. If no appropriate terminal driver is available, move to a different terminal or return to the Installation program to install additional terminal drivers.

If the screen appears jumbled or filled with strange characters when you enter Corel WordPerfect 7, there may be some incompatibility between the `WPTERM7` setting and the terminal itself. For example, `WPTERM7` may be set to `vt102`, but your terminal is in `vt220` mode. If this occurs, you may still be able to exit Corel WordPerfect by following these steps:

- 1 Hold down **Ctrl**, then press `[` (left square bracket).
- 2 Press `[`.
- 3 Hold down **Ctrl**, then press `c`.

This sequence of keystrokes sends a hard-coded Exit command to Corel WordPerfect.

If the above steps do not return you to a system prompt, you must free up the terminal by killing the process.

HINT: If you do not know the UNIX commands for finding and killing a process, see *Appendix C: UNIX Command Quick Reference* for suggestions.

After freeing your terminal, correct your `WPTERM7` setting by following the steps provided earlier in this section.

Another obstacle to the proper functioning of your terminal is that someone may have altered the function key assignments for the keyboard. The screen may look normal when you enter Corel WordPerfect, but the function keys do not respond as expected. Corel WordPerfect terminal drivers are written for default function key assignments (values). Consequently, if the function keys are not default values, they will not work as intended. See *Terminal Definition Program*.

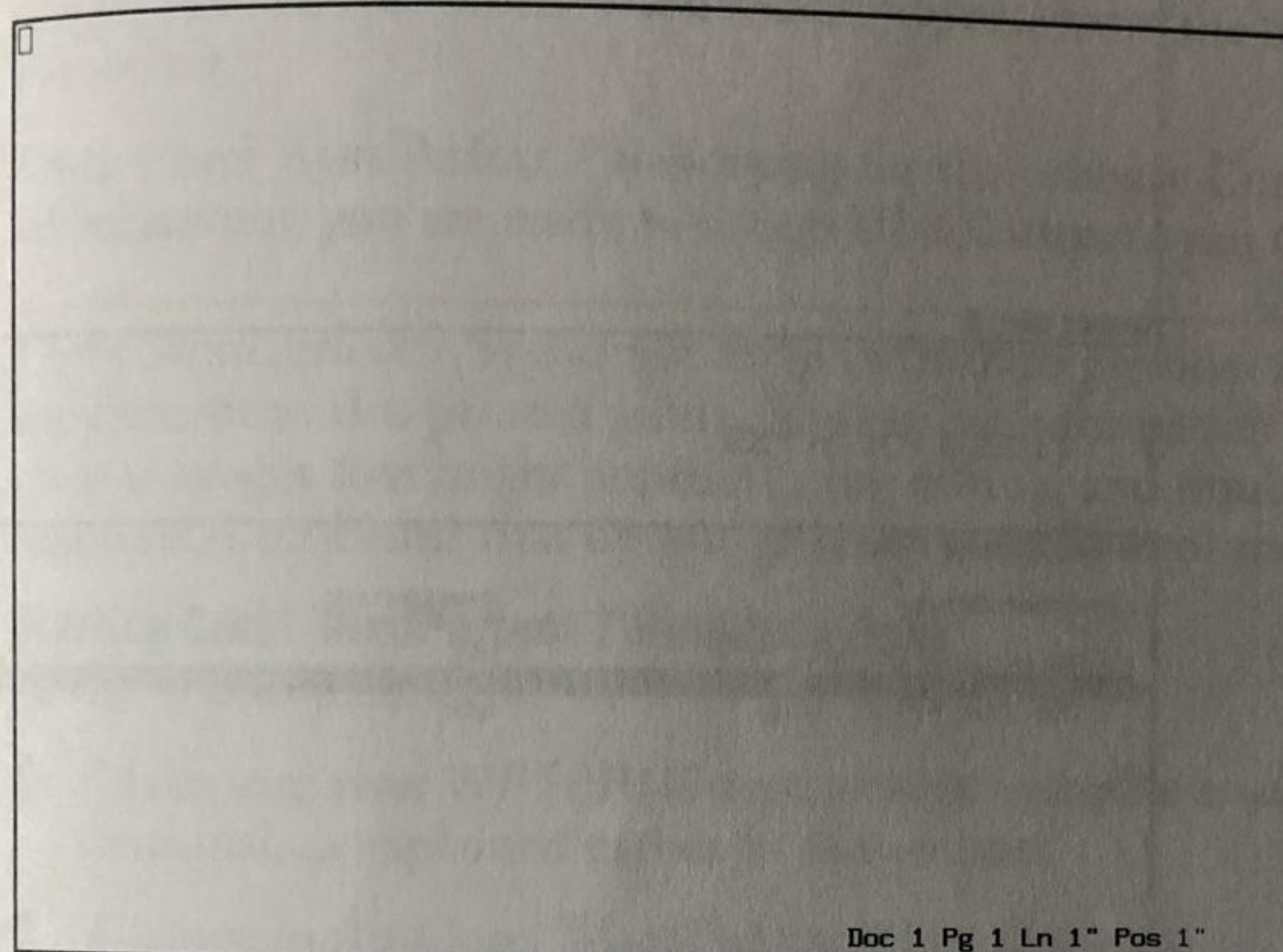
Testing Corel WordPerfect 7

in *Corel WordPerfect 7 in Corel WP Management* in Corel WordPerfect 7 SysAdmin Help (wpsahlp) for additional information.

IMPORTANT: Use the Terminal Setup utility (wptset) to coordinate WPTERM7 settings with specific users or terminals and thus minimize problems with incompatible WPTERM7 settings.

See *Introducing Corel WordPerfect 7 SysAdmin Help* later in this section for help resolving other problems.

If your Corel WordPerfect installation is properly set up, Corel WordPerfect 7 appears on the screen.



To verify your selection of a WPTERM7 setting,

- 1 Press **Help** using the keystroke you noted on the opening Corel WordPerfect screen.

- 2 Look up the keystrokes for various Corel WordPerfect features that require different combinations of keys, such as Cancel, Print, Spell, and Block.

HINT: For example, in the Help screen, press **c** for Cancel, then note its keystroke. Press **p** until the list displays the keystroke for Print. Press **s** until the list displays the keystroke for Spell. Press **b** to look up the keystroke for Block. Write down the keystrokes for testing purposes.

- 3 Press **Enter** to exit Help.
- 4 Try the keystrokes for the Corel WordPerfect features you looked up.

If any of the keystrokes do not produce the expected feature, see *Resolving Problems Starting Corel WordPerfect 7* above for suggestions.

To test printing from Corel WordPerfect 7,

- 5 Type **This is a test.** in the Corel WordPerfect document screen.

6 Press **Print** to display the Print screen.

Print

1 - Full Document

2 - Page

3 - Document on Disk

4 - Printer Control

5 - Multiple Pages

6 - View Document

7 - Initialize Printer

Options

S - Select Printer

B - Binding Offset

N - Number of Copies

U - Multiple Copies Generated by

G - Graphics Quality

T - Text Quality

A - Banners

J - Job Type

R - Priority

S HP LaserJet 4 at lp2

0"

1

WordPerfect

Medium

High

No

"[ALL TYPES]"

50

Selection: **C**

7 Press **s** for Select.

Print: Select Printer

Printer Driver	Destination
S Apple LaserWriter IINTX	lp1
* S HP LaserJet 4	lp2
S IBM 2391 PPS II Plus	lp3

1 Select; 2 Additional Printers; 3 Edit; 4 Copy; 5 Delete; 6 Help; 7 Update: 1

8 Move the bar cursor to a printer to test, then press **s** for Select. The selected printer appears under Print Options in the Print screen.

9 Press **f** for Full Document to send the test document to the printer.

HINT: If no printers are listed, see *Set Up Printers* in *How Do I* in Corel WordPerfect 7 SysAdmin Help (wpsahlp) for information about adding printers to Corel WordPerfect after installation.

If you receive an error message when you try to print the test document, see *Introducing Corel WordPerfect 7 SysAdmin Help* below for help resolving the problem.

- 10 Repeat steps 6 through 9 to test as many printers as you want.
- 11 Press **Print**, press **s** for Select Printer, select the printer you want as the system default printer for all users, then press **Enter**.

Users can later change their default printers as needed.

To exit Corel WordPerfect,

- 12 Use Help to find the keystroke for Exit, then press **Exit**.

HINT: You can also choose Corel WordPerfect features from a menu bar. Use Help to find the keystroke for the Menu Bar feature on your terminal. Use that keystroke to display the menu bar at the top of the Corel WordPerfect document screen, then choose Corel WordPerfect features from the menu instead of using keystrokes.

Once Corel WordPerfect 7 is working for the primary Corel WordPerfect administrator, you are ready to set up UNIX users to run Corel WordPerfect.

Corel WordPerfect 7 SysAdmin Help (`wpsahlp`) provides a detailed online supplement to this printed guide. The online information includes solutions to error messages that might appear during testing, and troubleshooting tips to help you resolve problems that do not generate specific error messages.

Starting Corel WordPerfect 7 SysAdmin Help

At the system prompt,

- 1 Make sure your `WPTERM7` environment variable is set correctly for your terminal, as explained earlier in this section.
- 2 Change to the Corel WordPerfect `wpbin` directory.
- 3 Type `./wpsahlp`, then press **Enter** to start Corel WordPerfect 7 SysAdmin Help on a character-based terminal and display the Contents screen.

or

If you are on an X station, type `../shbin10/wpxtool -e ./wpsahlp`, then press **Enter**. See *Starting Corel WordPerfect 7 on an X Station* earlier in this section

for more information about running a character-based program on an X station.

04/28/95 15:10		Directory .../wp5260/wp1ib/5.2+_SysAdmin_Help/*		Used: 249178	Files: 4
Document size: 0		Type	Filename	Size	
Descriptive Name					
Current Directory			Current	<DIR>	
Parent Directory			.. Parent	<DIR>	
			=====	<DIR>	
			1..How_Do_I	<DIR>	
			2..Troubleshooting	<DIR>	
			3..Info_Sources	<DIR>	
			4..WP_Management	<DIR>	
			5..Print_Management	<DIR>	
				455	
			contents	24309	
			glossary	153027	
			index	71387	
-- Contents					
-- Glossary					
-- Index					

1 Retrieve; 2 Delete; 3 Move/Rename; 4 Print; 5 Short/Long Display;
6 Change Mode; 7 Other Directory; 8 Copy; 9 Find; N Name Search; Look: L

Corel WordPerfect 7 SysAdmin Help is a collection of Corel WordPerfect 7 files organized into a multi-layered directory structure and accessed using the List Files and QuickFinder® capabilities of Corel WordPerfect. You can view the SysAdmin Help files in the List Files screen, or print them. You can also use the Search and QuickFinder features of List Files to locate specific information in the files.

To display information about using Corel WordPerfect 7 SysAdmin Help,

- 4 Choose 1..How_Do_I, then choose 1..Do_The_Basics, then view A. Use SysAdmin Help.

HINT: To choose a directory in 7 SysAdmin Help, move the bar cursor to it, then press **Enter** twice. To view a file, move the bar cursor to it, then press **Enter**.

- 5 Explore the capabilities of Corel WordPerfect 7 SysAdmin Help, then choose **Parent** at the top of the directory list until you return to the main Contents screen.

- 6 Choose **Glossary** to list the terms in the Corel WordPerfect 7 glossary.

HINT: You can look up unfamiliar terms in the *Glossary* while reading Help topics.

Looking Up Error Messages

Where possible, Corel WordPerfect error messages include an explanation of the error and suggested solutions to the problem. However, some error messages require more lengthy explanations and steps to resolve the problem. Such error messages are documented in Corel WordPerfect 7 SysAdmin Help.

In the Corel WordPerfect 7 SysAdmin Help Contents screen,

- 1 Choose **2..Troubleshooting**, then view **A. Error Messages**.
- 2 To locate a specific error message, press **Search**, type a significant phrase from the error message, word for word as it appears in the message, then press **Enter**.

HINT: For example, if you received the message "Cannot connect to license daemon", you could press **Search**, type **cannot connect**, then press **Enter** to locate that error message in the list. If the words you type appear in several error messages, you may need to press **Search** several times to reach the specific message you need.

- 3 Note the explanation of the problem and its recommended solution.

Looking Up Troubleshooting Tips

Some problems do not generate a specific error message (for example, when you try to print from Corel WordPerfect and the printer does not respond at all). In such situations, you can try various troubleshooting strategies until you locate the source of the problem.

In the Corel WordPerfect 7 SysAdmin Help Contents screen,

- 1 Choose **2..Troubleshooting**, then view the topic that pertains to the problem you want to resolve.

HINT: For example, if you are having problems with the Print Server, you could view **D. Print Server Troubleshooting**.

You may have to try several troubleshooting strategies before you discover the source of the problem and how to resolve it.

Exiting Corel WordPerfect 7 SysAdmin Help

When you have finished reading topics in Corel WordPerfect 7 SysAdmin Help,

- 1 Press **Exit** and respond to the prompts until you return to the system prompt.

Throughout this guide, you are directed to specific parts of Corel WordPerfect SysAdmin Help for more in-depth information than is provided in the printed documentation. See *Finding More Documentation Online* for a listing of the contents of Corel WordPerfect 7 SysAdmin Help and for further instructions on its use.

Setting Up UNIX Users to Run Corel WordPerfect 7

As the primary Corel WordPerfect administrator, you need to perform several setup tasks for users to make it easier for them to start Corel WordPerfect.

IMPORTANT: Before setting up UNIX users to run Corel WordPerfect 7, you should have completed tasks 1 through 9 on the *Installation Checklist*.

Setting Up Defaults for Corel WordPerfect 7 Users

When you run Corel WordPerfect 7 as a Corel WordPerfect administrator, your choices set the defaults for all users. If you add printers to Corel WordPerfect, they are shared printers, available to all users. If you change setup information, your settings become the default settings for all users who do not already have personal settings files.

Setup information provided by a Corel WordPerfect administrator is stored in the `.wp7c.set` file in the Corel WordPerfect `wplib` directory. Shared printers are listed in the `.wpc7c.set` file in the Corel WordPerfect `shlib10` directory. Printer drivers (`.prs` files) for shared printers are also stored in the `shlib10` directory.

When users start Corel WordPerfect for the first time, Corel WordPerfect uses the defaults provided by the Corel WordPerfect administrator. When users select a printer and change setup information, their personal choices are stored in personal `.wp7c.set` and `.wpc7c.set` files in the `.wpcorp` subdirectory of their home directories.

IMPORTANT: Once users have created personal settings files in the `.wpcorp` subdirectory of their home directories, changes made by a Corel WordPerfect administrator do not affect them unless they delete their personal `.wp7c.set` and `.wpc7c.set` files or use the `-x` and/or `-xwpc` startup option(s) so that Corel WordPerfect accesses the system default settings again.

Providing Default Setup Information

The Setup feature of Corel WordPerfect 7 lets you customize the functioning of Corel WordPerfect. As a Corel WordPerfect administrator, you can customize the functioning of Corel WordPerfect for all users in many ways, including:

- ♦ Specifying default locations of files (such as common directories for documents, graphics, macros, styles, and spreadsheets)
- ♦ Setting up default initial codes, keyboard layouts, backup options, printer setup information, and so on
- ♦ Establishing printer restrictions (such as preventing specified users and/or groups from initializing printers, adding personal printers, using Printer Control options, or setting their print job priority above a specified maximum)

Setting Up Shared Printers

When you chose a printer in *Testing Your Corel WordPerfect 7 Installation*, that printer became the initial default printer for all Corel WordPerfect users. The printer setup you performed during installation is sufficient to let you print from Corel WordPerfect, but you may want to customize the way shared printers are set up, including:

- ♦ Selecting any third-party fonts you have installed in each printer so that users can select them in Corel WordPerfect
- ♦ Selecting the default font for each printer driver
- ♦ Selecting a sheet feeder for any printers equipped with one
- ♦ Providing customized paper size and type options for special forms needed by users

Since regular users cannot modify shared printers, you must make sure all printers are completely set up and ready for use after installation.

Setting Corel WordPerfect 7 for Each User

To ensure that each of your users can access Corel WordPerfect 7,

- 1 Explain to users how they should start Corel WordPerfect 7 (for example, start Corel WordPerfect from the command line, use a script file, or choose it from a menu).
- 2 Make sure each user's `WPTERM7` environment variable is set correctly for each terminal.
- 3 Have each user log in and try to start Corel WordPerfect 7 using the approach you have set up.

If Corel WordPerfect fails to start for a user,

- 4 Have that user change to the Corel WordPerfect `wpbin` directory, type `./wp`, then press **Enter** to start Corel WordPerfect from the command line so that an error message can be seen.

Once users can start Corel WordPerfect,

- 5 Have each user select a printer and print a test document.

See *Introducing Corel WordPerfect 7 SysAdmin Help* in *Testing Your Corel WordPerfect 7 Installation* for help solving any problems that arise.

Completing Optional Corel WordPerfect 7 Setup Tasks

Additional option tasks for setting up Corel WordPerfect 7 include:

- ♦ Using Corel WordPerfect startup options
- ♦ Setting Corel WordPerfect environment variables
- ♦ Authorizing Corel WordPerfect administrators
- ♦ Enabling mail in Corel WordPerfect
- ♦ Running Corel WordPerfect in multiple languages
- ♦ Running Corel WordPerfect on a remote system
- ♦ Remote mounting the Corel WordPerfect directories

See *Corel WordPerfect 7 in Corel WP Management* in Corel WordPerfect 7 SysAdmin Help (`wpsahlp`) for more information about these optional tasks.

Finding More Documentation Online

.....

Using SysAdmin Help (xwpsahlp) for the X Window System

This guide relies heavily on a supplementary online help system called SysAdmin Help (xwpsahlp). Help contains solutions for error messages, troubleshooting techniques, and background information such as details on the interaction between the WPApp printing process and UNIX print spoolers.

You were introduced to SysAdmin Help during the installation process. If you have not used SysAdmin Help yet, follow the instructions in *Introducing Corel WordPerfect 7 SysAdmin Help* in *Testing Your Corel WordPerfect 7 Installation* to learn how to use jump terms, pop-up terms, the glossary, and other basic features of SysAdmin Help.

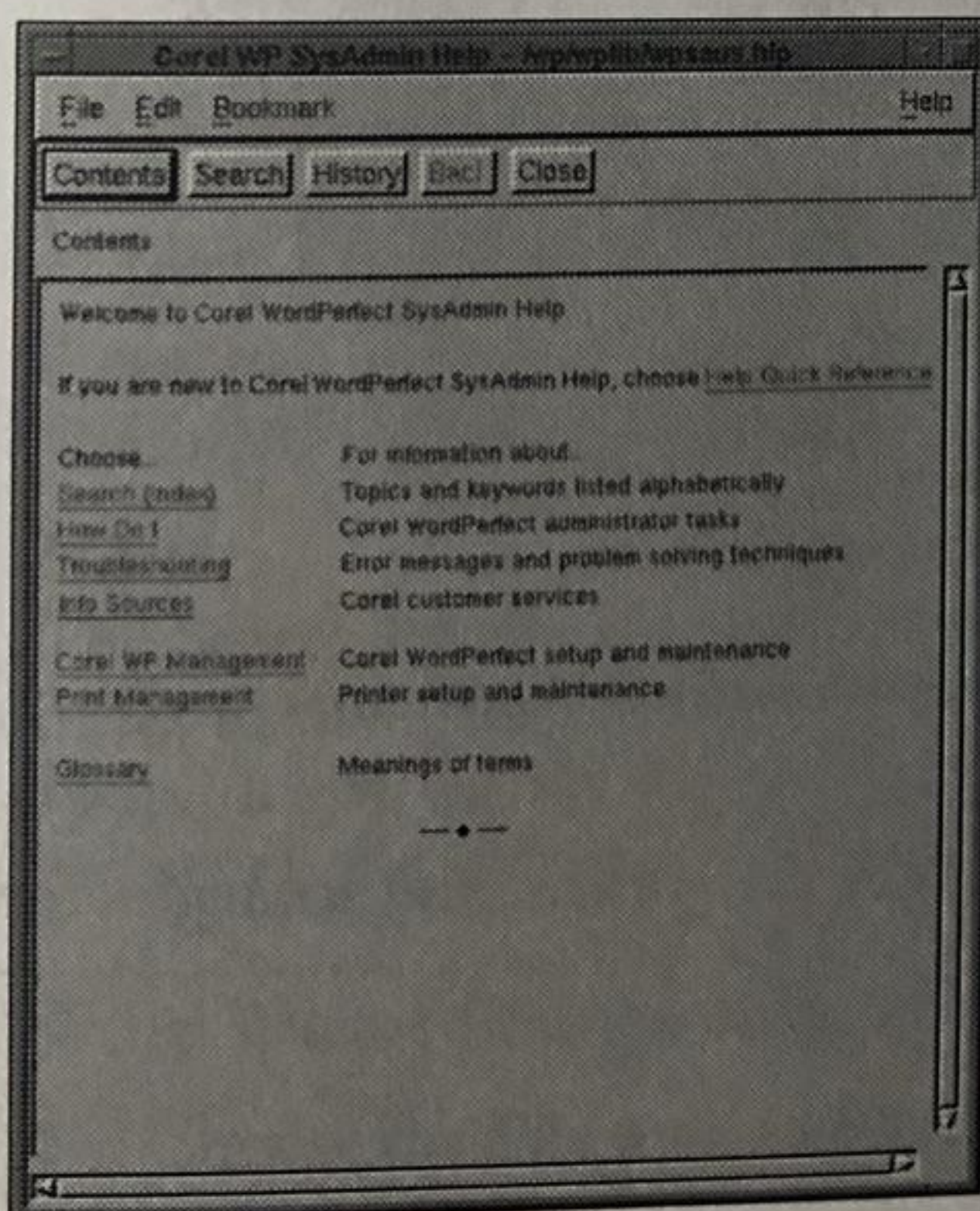
IMPORTANT: By looking at SysAdmin Help, you can solve users' problems more quickly.

If you are already running other GUI applications under your window manager, SysAdmin Help should be able to start. The SysAdmin Help executable (xwpsahlp) is installed with permissions that allow access for all users. You may want to restrict the permissions on xwpsahlp in the Corel WordPerfect wpbin directory to allow only the primary Corel WordPerfect administrator and other authorized Corel WordPerfect administrators to access it.

To start SysAdmin Help at the system prompt at an X station,

- 1 Change to the Corel WordPerfect wpbin directory, type `./xwpsahlp`, then press **Enter** to start SysAdmin Help and display the Contents window.

BASICS: The `./` tells UNIX to check the current directory for the xwpsahlp executable.



To learn how to use SysAdmin Help,

- 2 Choose **Help Quick Reference**.

Instructional topics include:

- Jump Terms
- Pop-up Terms
- Contents Button
- Search Button
- History Button
- Back Button
- File Menu
- Edit Menu
- Bookmark Menu
- Help Menu
- Glossary

3 Experiment with these topics.

Exploring Corel WordPerfect 7 SysAdmin Help

The Contents window lists the main online topics.

How Do I

Provides step-by-step instructions for performing common system administration tasks, including:

Use Basic Features

- Use Corel WordPerfect SysAdmin Help
- Look Up Error Messages
- Troubleshoot Problems
- Use Basic UNIX Commands
- Work in a Windowing Environment

Manage Corel WordPerfect

- Customize Corel WordPerfect
- Maintain the License Manager
- Manage Speller Dictionaries
- Install an Update
- Upgrade a Demonstration Copy

Manage WPAApp Printing

- Set Up Printers
- Set Print Preferences
- Set Up WPAApp Printer Destinations
- Use Printer Control
- Use Third-Party Fonts with Corel WordPerfect

Troubleshooting

Includes error messages, symptoms, and strategies for:

- Printers
- Print Server
- Printer Destination Program
- Font Installer
- Corel WordPerfect
- License Manager
- X Fonts

It also includes a general, alphabetized list of error messages. If you do not find the answers here, you can jump to *Info Sources*.

Corel WP Management

Provides detailed information about the tools you use to keep Corel WordPerfect running smoothly for your users. Topics include:

- Corel WordPerfect 7
- License Manager
- Speller Utility
- Installation Program
- Upgrade Utility
- Directories and Files
- Error Message List
- UNIX Commands

If you do not find answers here, you can jump to *Troubleshooting* and *Info Sources*.

Print Management

Provides detailed technical information about how the WPAApp printing process and print-related programs interact with the UNIX print spooler and other aspects of your system configuration. Topics include:

- UNIX Print Spoolers
- WPAApp Printing
- Print Manager
- Printer Destination Program
- Print Server
- Font Installer
- Corel WordPerfect Print
- wpped Script
- Temporary Files
- Troubleshooting Printers

You can also jump to *Troubleshooting* and *Info Sources* for more information.

Glossary

Defines technical or specialized terms.

Search

The Search feature (available through the Search button) is similar to a printed index in that you can look up words that lead you to information in SysAdmin Help. If you are not sure which section contains the information you need, you can access the information directly by providing a related keyword.

When you are finished using SysAdmin Help,

1 Choose the File menu, then choose Exit.

HINT: If you find that you return frequently to the same SysAdmin Help topic, create a bookmark to get instant direct access to the information. For instructions, choose **Help Quick Reference** in the Contents window, then choose **Bookmark Menu**.

Using SysAdmin Help (wpsahlp) for Character-Based Terminals

This guide relies heavily on a supplementary online Help system called Corel® WordPerfect® 7 for Character-Based Terminals SysAdmin Help (wpsahlp). Help contains solutions to error messages, troubleshooting techniques, and background information such as details on the interaction between the WPApp printing process and UNIX print spoolers.

You were introduced to SysAdmin Help during the installation process. If you have not used SysAdmin Help yet, follow the instructions in *Introducing Corel WordPerfect 7 SysAdmin Help* in *Testing Your Corel WordPerfect 7 Installation* to learn how to move in Help.

IMPORTANT: By looking at SysAdmin Help, you can solve users' problems more quickly.

Starting Corel WordPerfect 7 SysAdmin Help

The SysAdmin Help executable (wpsahlp) is installed with permissions that allow access for all users. You may want to restrict the permissions on wpsahlp in the Corel WordPerfect wpbin directory to allow only the primary Corel WordPerfect administrator and other authorized Corel WordPerfect administrators to access it.

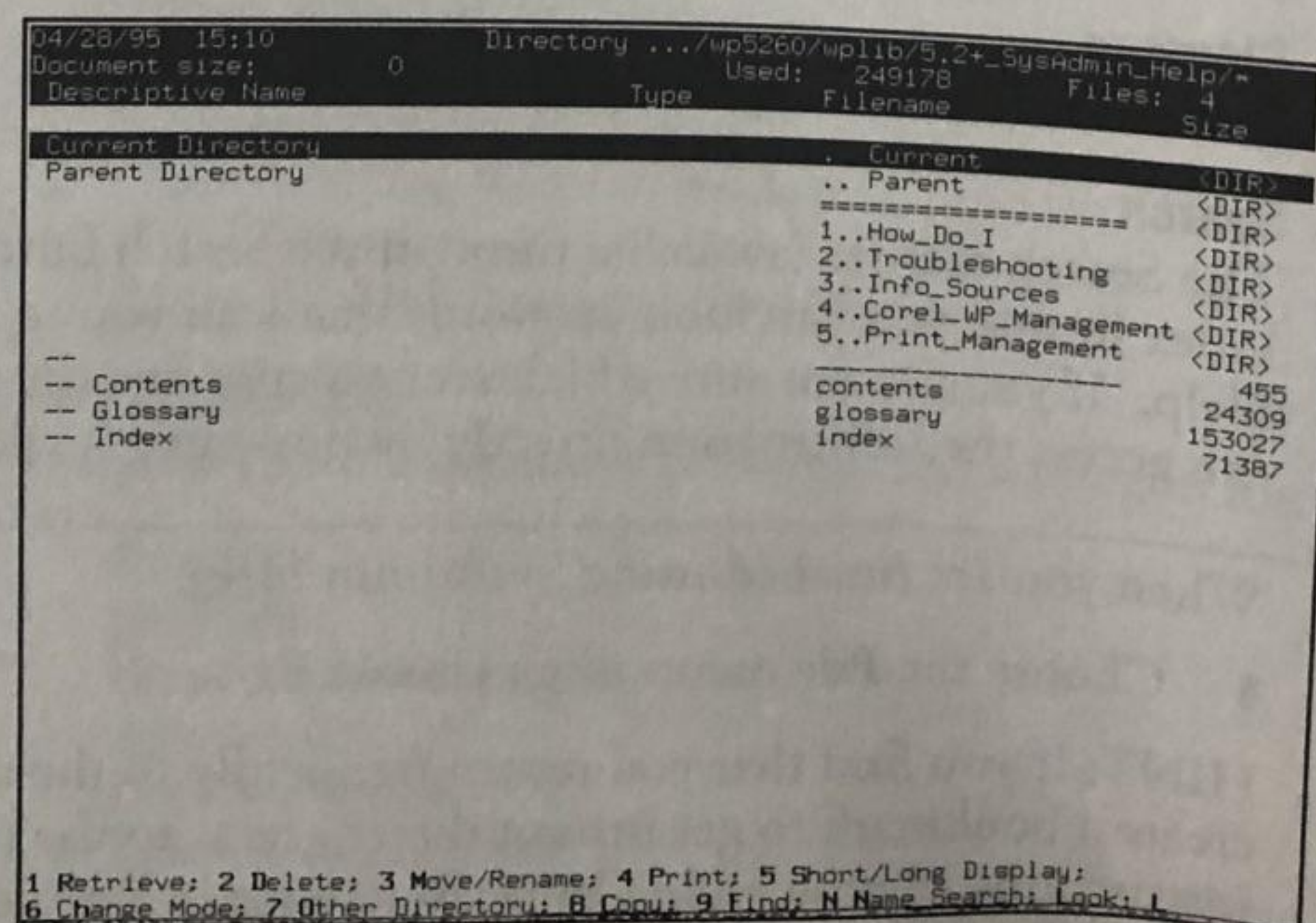
To start SysAdmin Help at the system prompt,

- 1 Set the WPTERM7 environment variable appropriately for your terminal.
- 2 Change to the Corel WordPerfect wpbin directory.
- 3 Type `./wpsahlp`, then press **Enter** to start SysAdmin Help on a character-based terminal and display the Contents screen.

or

If you are on an X station, type `../shbin10/wpxtool -e ./wpsahlp`, then press **Enter**.

HINT: If you need assistance with any of these steps, see *Introducing Corel WordPerfect 7 SysAdmin Help* in *Testing Your Corel WordPerfect 7 Installation*.



Descriptive Name	Type	Filename	Files	Size
Current Directory	.	Current		
Parent Directory	..	Parent		
	=====			
		1..How_Do_I	<DIR>	
		2..Troubleshooting	<DIR>	
		3..Info_Sources	<DIR>	
		4..Corel_WP_Management	<DIR>	
		5..Print_Management	<DIR>	
-- Contents		contents		455
-- Glossary		glossary		24309
-- Index		index		153027
				71387

1 Retrieve; 2 Delete; 3 Move/Rename; 4 Print; 5 Short/Long Display;
6 Change Mode; 7 Other Directory; 8 Copy; 9 Find; N Name Search; Look; I

SysAdmin Help is a collection of Corel WordPerfect 7 files organized into a multi-layered directory structure and accessed using the List Files capabilities of Corel WordPerfect. You can view the SysAdmin Help files in the List Files screen, or you can print them. You can also use the Search and QuickFinder® features of List Files to locate specific information in the files.

To learn how to use SysAdmin Help,

- 4 Choose 1..How_Do_I, choose 1..Do_The_Basics, then view A. Use 7 SysAdmin Help.

To choose a directory in SysAdmin Help, move the bar cursor to it, then press **Enter** twice. To view a file, move the bar cursor to it, then press **Enter**.

- 5 Read through the *Use 7 SysAdmin Help* topic to learn how to use the Contents, Index, and Glossary files.
- 6 Follow the instructions provided in the *Use 7 SysAdmin Help* topic to create a QuickFinder index of the SysAdmin Help files.
- 7 Experiment with these features.

The Contents screen lists the main online topics.

How Do I

Provides step-by-step instructions for performing common system administrator tasks, including:

Do the Basics

- Use 7 SysAdmin Help
- Troubleshoot Problems
- Use Basic UNIX Commands

Manage Corel WordPerfect 7

- Corel WordPerfect 7
- Licensing
- Dictionaries
- Updates
- Demo Copies

Manage Printing

- Printer Setup
- Destinations
- Printer Control

Troubleshooting

Lists solutions to error messages and troubleshooting information for specific topics such as printers, the Print Server, the License Manager, and terminals.

Corel WP Management

Provides detailed information about the tools you use to keep Corel WordPerfect running smoothly for your users. Topics include:

- Corel WordPerfect 7
- License Manager

Speller Utility
Install Program
Upgrade Utility
File List

If you do not find answers here, you can look in *How Do I* and *Info Sources*.

Print Management

Provides detailed technical information about how the WPAApp printing process and print-related programs interact with the UNIX print spooler and other aspects of your system configuration. Topics include:

Print Spoolers
WPAApp Printing
Destinations
Print Server
Corel WP Print
wpped Script
Troubleshooting

If you do not find answers here, you can look in *How Do I* and *Info Sources*.

Glossary

Defines technical or specialized terms.

Search and QuickFinder

Use Search and QuickFinder features to locate information in Help. Using Search, you can locate specified words in files' descriptive names. Using QuickFinder, you can locate specified words in the text of the files themselves. See online Help for more information about using QuickFinder.

Exiting Corel WordPerfect 7 SysAdmin Help

When you are finished using SysAdmin Help,

- 1 Press **Exit** and respond to the prompts until you return to the system prompt.

Appendix

.....

Appendix A: Non-root Installations of Corel WordPerfect

Although you are not required to log in as root to install Corel® WordPerfect®, root permissions let the Installation program perform some installation activities for you automatically, such as writing specialized Corel WordPerfect information to certain UNIX system files. If you want this installation assistance, log in as root and follow the standard installation instructions in *Installing Corel WordPerfect 7 at a GUI Terminal* or *Installing Corel WordPerfect 7 at a Character-based Terminal*.

Preparation for a Non-root Installation of Corel WordPerfect

To prepare for a non-root installation of Corel WordPerfect,

- 1 Choose a username to function as the primary Corel WordPerfect administrator. You can use your own username or another username that any administrator could use to log in. If necessary, create this username on your system.
- 2 Decide whether or not you want the Installation program to write specialized Corel WordPerfect information to system files.

If allowed, the Installation program writes information to the system files and directories listed below.

System File

Type of Information

UNIX system boot file
(such as /etc/rc or
/etc/rc.local)

Command to start the License Manager each time you reboot your system

/etc/magic file

Lines enabling the UNIX file command to display file types for Corel WordPerfect files (such as graphics files, macro files, style files, and so on)

UNIX print spooler file
(such as /etc/printcap)

Specialized spooler option to ensure that Corel WordPerfect print jobs arrive at the printer *raw*, that is, with no character translation introduced by the UNIX print spooler file(s)

UNIX X resources
directory (such as
/usr/lib/X11/appdefaults)

Wp60 X resource file containing default Corel WordPerfect resource settings

If you want the Installation program to write specialized Corel WordPerfect information to these system files,

- 3 Set the permissions on these files so that the primary Corel WordPerfect administrator user can write to them.

Once these preparations are finished, you can follow the installation instructions provided in *Installing Corel WordPerfect 7 at a GUI Terminal* or *Installing Corel WordPerfect 7 at a Character-based Terminal*.

- 4 Once the installation is complete, reset the permissions to their previous settings to avoid compromising system security.

Post-Installation Tasks

If you do not have write access to a particular system file while installing Corel WordPerfect, the Installation program notifies you that you do not have permission to perform the action and refers you to the `README.install` file in the Corel WordPerfect `wpbin` directory, which explains how to perform the modifications to the UNIX system file manually. To make these modifications, you must use a UNIX text editor such as `vi` or `xmeditor`.

IMPORTANT: When you are not logged in as `root`, the Installation program cannot start the License Manager for you automatically. See *License Manager* in *WP Management* in Corel WordPerfect SysAdmin Help for instructions.

Appendix B: Remote Installations of Corel WordPerfect

The installation instructions in *Installing Corel WordPerfect 7 at a GUI Terminal* and *Installing Corel WordPerfect 7 at a Character-based Terminal* assume that the drive where you place the media is on the same machine where you plan to install Corel® WordPerfect®. This approach avoids network configuration issues that could hinder the installation process, such as what permissions the user on the local machine has for writing files across the network to a remote machine.

If the UNIX machine where you want to install Corel WordPerfect does not have a media drive, you can install Corel WordPerfect across a network to a remote machine. You can approach such a remote installation in several ways, depending on the media type you have and the amount of space available on the machine with the media drive.

In the examples that illustrate the remote installation process in this section, the UNIX machine named *unixmain* has a media drive, but the UNIX machine named *unix2* does not. The goal of the steps in this section is to install Corel WordPerfect on *unix2* where no media drive is available.

Remote Installation from a CD-ROM

If the machine with the CD-ROM drive is not the machine where you want to install Corel WordPerfect, two mount point directories are required to perform a remote installation.

- ♦ Mount point #1: On the machine with the CD-ROM drive (*unixmain* in this example), you must choose or create a mount point directory for the CD-ROM. You can use any directory for this purpose.
- ♦ Mount point #2: On the machine where you plan to install Corel WordPerfect (*unix2* in this example), you must choose or create a mount point on which you will remote mount the CD-ROM mount-point directory on the other machine.

To perform a remote installation from a CD-ROM,

- 1 Log in as root where you have access to the CD-ROM drive (*unixmain* in this example), then insert the Corel WordPerfect CD-ROM into the drive.
- 2 Choose or create the mount point directory for the CD-ROM (mount point #1 as defined above), then mount the CD-ROM. See your UNIX operating system documentation or man pages for information if you need assistance with this task.

HINT: See *Loading Corel WordPerfect from a CD-ROM* in *Loading the Corel WordPerfect Media* for suggested mount commands.

- 3 Make a mounted CD-ROM drive available for remote mounting.
- 4 Log in as root to the machine where you want to install Corel WordPerfect (*unix2* in this example).
- 5 Choose or create the directory to serve as the mount point for the CD-ROM directory on the other machine (mount point #2 as defined above).

- 6 Remote mount the directory where the CD-ROM is already mounted (mount point #1 on *unixmain* in this example) to the local mount directory (mount point #2 on *unix2* in this example). See your UNIX operating system documentation or *man* pages for information if you need assistance with this task.

IMPORTANT: If you are planning a non-root installation of Corel WordPerfect, you can log out as *root* at this time and log back in as the primary Corel WordPerfect administrator recorded on your *Planning List*.

- 7 Refer to your *Planning List* for the name of the directory you plan to use for the Corel WordPerfect installation directory.
- 8 If the directory does not already exist, create the Corel WordPerfect installation directory.

BASICS: For example, if you decided to use */apps/wp60* as your Corel WordPerfect installation directory, type **mkdir /apps/wp60**, then press *Enter*.

- 9 Follow steps 1 through 4 in *Running the Installation Program (install.wp)* in *Loading the Corel WordPerfect Media* to start the Installation program on the CD-ROM, then perform the installation as described in *Installing Corel WordPerfect* for the type of terminal you are using.

After the installation is complete,

- 10 Unmount the CD-ROM and the *cdrom* directory. See your UNIX operating system documentation or *man* pages for information if you need assistance with this task.

Appendix C: UNIX Command Quick Reference

This appendix provides examples of common UNIX commands that can be useful when installing and maintaining Corel® WordPerfect®. For more specific information about the commands available for your version of UNIX, see the documentation accompanying the UNIX operating system on your machine.

When the commands in this appendix include text in italics, the italics indicate a variable part of the command. Replace the text in italics with the specific information for your circumstances when you use the command.

IMPORTANT: The UNIX commands in this appendix are provided on the basis that Corel Corporation Limited makes no representations or warranties as to the availability or suitability of the commands for your particular version of UNIX or for your particular purpose, and that to the extent you use these commands in your own setting, you do so at your own risk. In no event will Corel Corporation Limited be liable for any damages, whether direct, consequential, incidental, or special, arising out of the use of or inability to use these UNIX commands.

System Information

Task	Command
Display UNIX release	<code>uname -a</code>
Display IBM RS/6000 release	<code>lspp -h bos.obj</code>
Check available disk space	<code>df</code>
Display command information	<code>man <i>command</i></code>

Environment Variables

Displaying Current Settings

Task	Command
List all environment variables	<code>env</code>
List one environment variable	<code>echo \$<i>VARIABLE</i></code>
List Corel WordPerfect variables	<code>env grep WP</code>
List shared variables	<code>env grep SH</code>

Setting Environment Variables in the C Shell

Task	Command
Modify PATH variable	<code>setenv PATH \$PATH\:/<i>directory</i></code>
Set DISPLAY variable	<code>setenv DISPLAY <i>ip_address:0</i></code>
Set Corel WordPerfect variable	<code>setenv <i>VARIABLE</i> <i>setting</i></code>

Setting Environment Variables in the Bourne Shell and Korn Shell

Task	Command
Modify PATH variable	<code>PATH=\$PATH:/<i>directory</i></code>
Set PATH variable	<code>export PATH</code>
Specify DISPLAY variable	<code>DISPLAY=<i>ip_address:0</i></code>
Set DISPLAY variable	<code>export DISPLAY</code>
Specify Corel WordPerfect variable	<code><i>VARIABLE</i>=<i>setting</i></code>
Set Corel WordPerfect variable	<code>export <i>VARIABLE</i></code>

Directories

Task

Display current directory path
Change to specific directory
Change to parent directory
Create a directory
Delete a directory
Rename a directory

Command

`pwd`
`cd /directory`
`cd ..`
`mkdir directoryname`
`rmdir directoryname`
`mv directoryname newname`

Files

Task

List files in current directory
List files plus file information
List files including hidden files
Scroll through UNIX text file
Page through UNIX text file
Rename file
Move file
Copy file
Copy file to remote system
Delete file
Look for file
Send file to display
List file types

Command

`ls`
`ls -l`
`ls -al`
`more filename`
`pg filename`
`mv filename newname`
`mv filename destination`
`cp filename destination`
`rcp filename hostname:/destination`
`rm filename`
`find / -name filename -print`
`cat filename`
`file *`

Printing

The sample printing commands listed below can help you set up system printers. System printers must be set up and working outside Corel WordPerfect before you can set up printing in Corel WordPerfect.

lpr Spooler

Task

Check status of lpr spooler
List system printers
Submit lpr print job
Cancel lpr print job

Command

`lpq`
`lpc status`
`lpr -P printer file`
`cancel job# printer`

lp Spooler

Task

Check status of lp spooler
Submit lp print job
Cancel lp print job
Shut down lp spooler
Start lp spooler

Command

`lpstat -t`
`lp -d printer filename`
`cancel job# printer`
`/usr/lib/lpshut`
`/usr/lib/lpsched`

AIX Spooler

Task	Command
Check status of AIX spooler	qchk -A
Submit AIX print job	qprt -P <i>aixqueue filename</i>
Cancel AIX print job	qcan -x <i>job#</i>
Stop AIX qdaemon	stopsrc -s qdaemon
Start AIX qdaemon	startsrc -s qdaemon

Processes

Task	Command
Find program process ID	ps -aux grep <i>program</i> ps -eaf grep <i>program</i>
Find user process ID	ps -aux grep <i>username</i> ps -u <i>username</i>
Kill process (exit normally)	kill -15 <i>PID</i>
Kill process (exit without cleanup)	kill -9 <i>PID</i>

Fonts

Task	Command
Display current fontpath	xset q
Add directory to fontpath	xset fp+ <i>/directory</i>
Reread updated font database	xset fp rehash
Compile font database	mkfontdir
List available Corel WordPerfect X fonts	xlsfonts grep wx
View Corel WordPerfect X font	xfd -fn <i>fontname</i>

Glossary/Index

.....

This glossary includes many specialized, technical terms used in this guide. You can find a more general glossary in the *Corel WordPerfect User's Guide*. You can also find a more extensive glossary online in Corel® WordPerfect® SysAdmin Help.

AIX IBM's implementation of the UNIX operating system. The RS/6000 system, among others, runs the AIX operating system.

AIX spooler The spooler used by the AIX operating system to control the flow of print jobs to printers. See also *spooler*.

.all file A file that stores codes and information for a group of related printers. Corel WordPerfect and related products extract printer-specific information from .all files to create individual printer drivers (.prs files) when you set up printers for use with WPApp printing.

argument A variable, constant, or expression required by a command or function. See also *command line option*, *startup option*.

banners Extra pages preceding and/or following print jobs on multi-user systems. The banner pages separate print jobs and identify the users to whom the print jobs belong.

baud rate The speed at which data is transmitted from one digital device to another (for example, from a computer to a printer). The devices must be configured at the same baud rate for information to transfer correctly.

BBS Bulletin Board Service. An online information distribution service that makes files available for downloading by users with modems.

bitmap Also called a paint image or raster image. A graphics image formed by a series of dots (pixels). Scanned photographs and images created in "paint" applications are bitmap images. Some X fonts are also stored in a bitmap format.

bitmap distribution (.bdf) fonts X fonts that have the same format across all versions of UNIX. See also *server normal (.snf) fonts*.

built-in fonts Fonts that are a standard part of your printer. Printers vary in the number of available built-in fonts.

cartridge fonts Fonts in addition to built-in fonts that are added to your printer by inserting a font cartridge.

CD-ROM Compact Disk—Read Only Memory. A means of data storage using optical storage technology. A single CD-ROM disk can hold more than 650 megabytes of information. Unlike diskettes, most CD-ROM disks can be read from but not written to.

command line option A parameter such as -s or -k that you provide along with a command to affect how the command is executed. For example, the command

`wpexc60 -s` starts the Print Server and the command `wpexc60 -k` stops (kills) it. See also *startup option*.

Corel WordPerfect administrator A user authorized by the primary Corel WordPerfect administrator to share administrative authority over system default Preferences and shared printers.

Corel WordPerfect characters Additional symbols included for use with Corel WordPerfect and related products. Corel WordPerfect characters include multinational characters, graphics characters, typographic symbols, iconic symbols, and math/scientific symbols.

Corel WordPerfect Print (`wprint/wprint7c`) Command that lets you print Corel WordPerfect documents from the command line, including batch merge capabilities.

data file A collection of information accessed by a program as it runs. Corel WordPerfect data files are stored in the `wplib` directory. Shared data files are stored in the `shlib10` directory.

Dedicated WPAApp Device printer destination A WPAApp printer destination to which the Print Server sends print jobs without using the UNIX print spooler. A Dedicated WPAApp Device printer destination should be used *only* for Corel WordPerfect print jobs. Since the UNIX print spooler is not involved, print jobs from other applications could collide with Corel WordPerfect print jobs at the printer, resulting in errors.

default A program's predetermined setting or action that takes effect unless specifically changed. Some defaults can be changed for all future work sessions; other defaults can be changed for one session and will reset when you exit.

destination See *printer destination*.

device A mechanism with a specific purpose. For example, printers and terminals are devices.

directory An index of the names of a group of files and subdirectories. The root directory is the main directory of a disk. All other directories branch from the root directory.

display fonts Fonts, usually rendered in low resolution, that mimic printer fonts.

driver A set of commands used to run peripheral devices. For example, Corel WordPerfect's `.prs` files are drivers used to run the printer.

environment variable A name used to represent data that affects the way an operating system or program runs and the devices it recognizes.

executable file A program file or application such as Corel WordPerfect itself (`xwp` or `wp`).

explicit See *focus policy*.

file locking A mechanism used by the UNIX operating system to ensure that only one user can open a file with write permission at any time. File locking prevents multiple users from modifying the same file simultaneously and overwriting each other's changes.

filter option A specification in the `/etc/printcap` file on an Lpr spooler system that controls how print jobs are sent to the printer.

focus policy The method of activating a window. An *explicit* (click-to-type) focus policy means that, to activate the window you want to be in, you must click that window. Once you click the window, all the text you type appears in that window regardless of where you move the mouse pointer. To type in another window, you must transfer the focus by clicking that window. An *implicit* (pointer) focus policy means that you can select a window by simply moving the mouse pointer into the window; no click is necessary. The mouse pointer must remain in the window for you to enter text; if you move the mouse pointer out of the window, the text you subsequently type is ignored or appears in the window the mouse pointer moved into.

font A group of letters, numbers, and symbols with a common typeface. Fonts are described by name, weight, and size, as in Helvetica Bold 10 pt.

font database The `fonts.dir` file in a font directory that lists all the font files found in that directory.

Font Installer (xwpfi) The program that lets you install third-party graphics fonts and printer fonts for use in Corel WordPerfect 7.

fontpath The list of directories where the window manager checks for font files.

font server A shared machine used specifically to store and provide X fonts to other machines in the network.

graphical user interface (GUI) A type of computer interface consisting of a visual metaphor of a real-world scene, often of a desktop. Within that scene are icons, representing actual objects, that the user can access and manipulate with a pointing device such as a mouse.

graphics fonts Fonts stored in a bitmap graphics format. Graphics fonts are typically used to generate the characters displayed on the screen but can also be used for printing.

group A set of users who share some file access privileges.

handshaking A method by which two pieces of hardware, such as a computer and printer, can communicate. Depending upon the devices communicating, handshaking occurs either as a hardware function (DTR handshaking) or through software (XON/XOFF handshaking).

home directory The directory associated with a particular user, typically the current directory after login.

host Any system that has at least one Internet address associated with it.

implicit See *focus policy*.

installation directory The directory under which the standard Corel WordPerfect subdirectories are created during installation.

Internet A wide area network connecting thousands of disparate networks in industry, education, government, and research. The Internet uses TCP/IP as the standard for transmitting information.

Internet address The numbering system used in TCP/IP Internet communications to specify a particular network or a particular host on that network with which to communicate. Internet addresses can be denoted in dotted decimal form (for example, 151.155.3.17) or in fully qualified hostname form (for example, Corel.com).

interprocess communication (IPC) The process by which programs communicate data to each other and synchronize their activities. For example, Corel WordPerfect uses interprocess communication while print jobs are being formatted and printed.

jump term An underlined or colored word or phrase in online Help in Corel WordPerfect 7. Clicking a jump term immediately switches you to the cross-referenced help topic. See also *pop-up term*.

language code A two-letter code for each language into which Corel WordPerfect has been translated. Used with the `-lang` startup option, a language code causes Corel WordPerfect to start in the language specified by the code.

.lex file The main dictionary file for use with the Speller. The .lex file may also contain hyphenation information.

line settings Input/output options, set using the UNIX `stty` command, that control how communication takes place between the host and a device.

local host The host on which a user logs in. See also *remote host*.

Lp spooler The print spooler on the versions of UNIX using the `lp` command to submit print jobs. See also *spooler*.

Lpr spooler The print spooler on the versions of UNIX using the `lpr` command to submit print jobs. See also *spooler*.

main dictionary The Speller dictionary provided with Corel WordPerfect, or a compatible third-party dictionary.

media The physical material, such as CD-ROM, on which data such as the Corel WordPerfect program files is stored for distribution.

Motif A popular graphical user interface based on the X Window System, available from Open Software Foundation*, IBM, Hewlett-Packard, and others. Also a programming toolkit used to create applications for the X Window System, such as the Motif Window Manager.

mount To make a file system accessible for users. The file system can be local or remote.

parameter A variable used in conjunction with a command to affect its result. See also *command line option*, *startup option*.

parity bit In serial communication, an extra bit added to a data word for parity checking. Parity checking adds up the bits in a one-byte data item, and if the parity bit setting disagrees with the odd/even result of the sum, the computer reports an error. Transmission of 8-bit characters typically uses no parity, while transmission of 7-bit characters typically uses even parity.

passthru printing Printing to a printer attached to the back of a terminal, where the print job must "pass through" the terminal to reach the printer. Passthru printing is not supported for X stations.

path The list of directories, as established by the **PATH** environment variable, where the operating system checks for programs to execute. If a program is not located in a directory in your path, you must type its full pathname to execute it.

pathname Directory and subdirectory names that tell the operating system where to find a file. For example, the path `/wp60/wpbin/xwp` refers to the `xwp` file in the `wpbin` subdirectory of the `wp60` directory.

Personal Print Queue (wppq) The program that monitors any print jobs that have not yet printed when you exit Corel WordPerfect.

pop-up term A dot-underlined or colored word or phrase in online Help in Corel WordPerfect 7. Clicking a pop-up term immediately displays a box with additional information or a glossary definition for the pop-up term. See also *jump term*.

port 1) A connection device between a computer and another component, such as a printer or modem. For example, a printer cable is plugged into the printer port on the computer so information can be sent to the printer. 2) The word used for a WPAApp printer destination prior to Corel WordPerfect 7. See *printer destination*.

portable compiled (.pcf) fonts X11 R5 X fonts that can be used on any version of UNIX.

PostScript The page description language for medium- to high-resolution printers used mainly in desktop publishing.

primary Corel WordPerfect administrator The user who installs Corel WordPerfect and owns the Corel WordPerfect program files.

Print Formatter (wpp) The program that replaces the codes used inside each Corel WordPerfect document with codes specific to the make and model of printer where the document will be printed.

Print Manager (xwppmgr) The program used to set up printers for use in Corel WordPerfect 7.

print queue See *queue*.

Print Server (wpexc60) The background process that provides communication between Corel WordPerfect print-related programs as they format Corel

WordPerfect documents and submit print jobs to the UNIX print spooler or other printer destination.

printer definition See *printer driver*.

printer destination The location of output for a print job. A WPAApp printer destination usually includes a specialized option in the UNIX print spooler file to ensure raw output, that is, output free from character translation introduced by the default spooler option. A lpr, lp, or AIX printer destination relies on a system spooler option (rather than a specialized option) to ensure raw output.

Printer Destination program (xwpdest/wpdest) The program used to create WPAApp printer destinations.

printer driver A file with a .prs extension that contains all the codes and information necessary to print a Corel WordPerfect file on a particular make and model of printer. Printer drivers are extracted from .all files when you set up printers for use with Corel WordPerfect and related products.

printer fonts Fonts designed specifically for printing, rather than for display on the screen.

.prs file See *printer driver*.

queue Jobs in a line to be processed in a first-in, first-out order. For example, Printer Control displays the print job queue, which holds print jobs waiting to be printed.

raw Unprocessed and unchanged. Corel WordPerfect print jobs must arrive at the printer raw, meaning that they must not be modified by the UNIX print spooler as it handles Corel WordPerfect print jobs.

remote host Any host on a network except the one where a user initially logs in.

root directory The directory that contains all other directories in the system.

root user The system user with the most authority.

screen fonts See *display fonts*.

server 1) A host that provides shared services to X stations and terminals on a network. For example, a font server provides X fonts to X stations on a network.
2) A process that provides shared services to users. For example, the Print Server facilitates the printing of Corel WordPerfect documents for all Corel WordPerfect users.

server normal (.snf) fonts X11 R4 X fonts that have different formats on different versions of UNIX and for different types of X terminals. Server normal fonts are compiled from standard bitmap distribution (.bdf) fonts into the specific format required by each version of UNIX.

shared directories The directories (shbin10 and shlib10) where Shared Code for Corel WordPerfect and related products is stored.

shbin10 directory The subdirectory in the Corel WordPerfect installation directory where shared executable files for Corel WordPerfect and related products are stored.

shlib10 directory The subdirectory in the Corel WordPerfect installation directory where shared data files for Corel WordPerfect and related products are stored.

soft fonts Fonts in addition to built-in fonts that are added to your printer by storing them on your system hard drive and then downloading them to the printer when they are needed to print a document.

spool command The command (`lpr`, `lp`, or `qprt`) used to send print jobs to the UNIX print spooler for processing.

spooler A program that controls the flow of data going to a device (such as a printer). If the device is busy, the spooler writes the data to disk, then sends the data when the device becomes available.

spooler file The file accessed by the UNIX print spooler as print jobs are processed. The `lpr` spooler uses the `/etc/printcap` file. The `lp` spooler uses interface files that are named after printers and stored in different directories depending on the version of UNIX running on your system. The AIX spooler uses the `/etc/qconfig` file.

startup file A file accessed by UNIX or a window manager whenever a user logs in. Some systems use `.profile` or `.login` files to set up users' environments. Motif uses the `.mwmrc` file to set up users' menus.

startup option A parameter such as `-adm` that you provide along with a command to affect how the command is executed. For example, the command `xwp -adm` starts Corel WordPerfect with administrator permissions. See also *command line option*.

stop bit In serial communication, the bit(s) inserted into the data stream to inform the receiving device that the transmission of a byte of storage is complete. Typically, one stop bit is used.

supplementary dictionary A Speller dictionary created and personalized by the user. Supplementary dictionaries include words and phrases not found in the main dictionary.

system administrator The person in charge of maintaining your UNIX system and the programs running on it. The system administrator holds the root password for your system.

tar command UNIX command used to load files from tape or diskettes.

temporary directory Directory where Corel WordPerfect stores its temporary files.

temporary file A file that a program creates while it is running. Temporary files are deleted when the program is exited properly. For example, Corel

WordPerfect creates document-related temporary files when you start the program and print-related temporary files whenever you print a document.

typeface A specific design of type, such as Courier or Palatino.

UDP User Datagram Protocol. An alternative to TCP/IP that requires a small, fixed number of sockets, which can be preferable on systems with limited resources.

umask The UNIX setting that indicates what permissions are not allowed on a file or directory created by a specific user. A typical umask of 022 creates files with 644 permissions.

window manager The program that lets you perform actions on the windows on your X station (for example, opening, closing, moving, and resizing windows). Illustrations in this guide show the appearance of the Motif window manager.

.wp7x.set file Settings file where Preferences and Corel WordPerfect information is stored.

WPAApp Refers to those programs, processes, and files that can be shared by versions of Corel WordPerfect and Novell GroupWise using Shared Code 1.0. Both versions of Corel WordPerfect 7 currently use Shared Code 1.0. Corel WordPerfect is produced by Corel Corporation. Novell GroupWise is produced by Novell, Inc.

wpbin directory The subdirectory in the Corel WordPerfect installation directory where Corel WordPerfect executable files are stored.

.wpc7x.set file Settings file where printers and other shared information is stored.

wpdest See *Printer Destination program (xwpdest)*.

wpdest.def file The file in the shlib10 directory where WPAApp printer destinations are stored.

wpexc60 See *Print Server (wpexc60)*.

wpfi See *Font Installer (xwpfi)*.

wplib directory The subdirectory in the Corel WordPerfect installation directory where Corel WordPerfect data files are stored.

wpp See *Print Formatter (wpp)*.

wppq See *Personal Print Queue (wppq)*.

wppmgr See *Print Manager (xwppmgr)*.

wprint See *Corel WordPerfect Print (wprint)*.

X emulator A program that causes a non-X Window System computer, such as a PC or Macintosh, to act as a X station.

X fonts Fonts used by X stations. X11 R4 X font files have .bdf and .snf extensions. X11 R5 X font files have .pcf extensions.

X resource A variable, the value of which can be changed to control how a feature of a program functions. For example, color settings in Corel WordPerfect are stored as X resources.

X station A display station that is capable of providing a graphical user interface (GUI). This might include a windowing workstation, X terminal, or other hardware (such as a PC or Macintosh) with an X emulator.

X terminal A GUI terminal designed for use with the X Window System.

xwpdest See *Printer Destination program (xwpdest)*.

xwpfi See *Font Installer (xwpfi)*.

xwppmgr See *Print Manager (xwppmgr)*.

Index

A

- .afm graphics/printer fonts, *search* SysAdmin Help
- .all files *see* Printer .all files
- Accounting utility, *search* SysAdmin Help
- Adding
 - job types, *search* SysAdmin Help
 - licensed sessions, *search* SysAdmin Help
 - printer destinations, *search* SysAdmin Help
 - printers, *search* SysAdmin Help
 - third-party fonts, *search* SysAdmin Help 6
- Adobe PostScript fonts, *search* SysAdmin Help
- AIX media types *see* IBM RS/6000
- AIX printer destinations 23, 46
 - search* SysAdmin Help
- AIX spooler, *search* SysAdmin Help
- app-defaults directory 73
- Arabic character set, printing, *search* SysAdmin Help
- AT&T 6386 consoles, WPTerm7 settings for 51
- AT&T GIS System 3000
 - mount command for CD-ROMs 15
- Authorizing Corel WordPerfect administrators, *search* SysAdmin Help
- Automatic creation of printer destinations, *search* SysAdmin Help

B

- .bdf font files, *search* SysAdmin Help
- Banners, leading and trailing, *search* SysAdmin Help
- Baud rate, *search* SysAdmin Help
- Binary transfer, moving files from Windows or DOS to UNIX 12
- Blinking cursor, turning off, *search* SysAdmin Help
- Bookmarks in SysAdmin Help 67
- Boot files, editing during installation 21, 41

C

- Canceling
 - Installation program 19, 39
 - print jobs, *search* SysAdmin Help
- Cartridge fonts, *search* SysAdmin Help
- CD-ROMs
 - mount commands for loading Corel WordPerfect 15
 - mounting for remote installation 75
- Character sets, *search* SysAdmin Help
- Character-based terminals *see* Terminals
 - installing Corel WordPerfect on 39
- Checking, License Manager, *search* SysAdmin Help
- Checklist, steps required for installation 4
- Color printers, *search* SysAdmin Help
- Command line options, *search* SysAdmin Help
- Commands, UNIX
 - mount (mount Corel WordPerfect CD-ROM) 15
 - setenv (set environment variable) 52, 53
- Common word list in Speller dictionaries, *search* SysAdmin Help
- Compatibility of Corel WordPerfect 7 for UNIX
 - with Corel WordPerfect 6.0 for Windows or DOS 12
 - with other related products for UNIX 11
- Compiling font database, *search* SysAdmin Help
- Conserving disk space 12
- Converting
 - macros from Corel WordPerfect 5.1 and 6.0 to 7 format 11
 - ports/destinations, *search* SysAdmin Help
 - Speller dictionaries, *search* SysAdmin Help
 - X fonts, *search* SysAdmin Help
- Copies, *search* SysAdmin Help
- Copying
 - printer destinations, *search* SysAdmin Help
 - printers, *search* SysAdmin Help

- Corel WordPerfect administrator, defined 9
- Corel WordPerfect directories 25, 48
 - search* SysAdmin Help
- Corel WordPerfect 6.0 for DOS
 - file compatibility with UNIX 12
- Corel WordPerfect 5.1 for UNIX
 - converting macros 11
 - overwriting 20, 40
- Corel WordPerfect 7 for UNIX
 - installing 19, 39
 - installing remotely 75
 - installing without root permissions 73
 - platform compatibility 12
 - system requirements 12
 - testing 28, 51
 - upgrading from Corel WordPerfect 5.1 and 6.0 11
 - search* SysAdmin Help
- Corel WordPerfect 7 for Windows
 - file compatibility with Corel WordPerfect 7 for UNIX 12
- Corel WordPerfect Print, *search* SysAdmin Help
- Corel WordPerfect SysAdmin Help *see* SysAdmin Help
- Could not open the file setting.trs, error 54
- Crash, cleaning up after, *search* SysAdmin Help
- Creating
 - job types, *search* SysAdmin Help
 - printer destination assignments 23, 45
 - printer destinations, *search* SysAdmin Help
 - printers, *search* SysAdmin Help
- Cursor, turning off blink, *search* SysAdmin Help
- Custom printer driver names 24
 - search* SysAdmin Help
- Custom Spool Command output type, *search* SysAdmin Help
- Cyrillic character set, printing, *search* SysAdmin Help

Daemons, *search* SysAdmin Help
Data bits, *search* SysAdmin Help
Data files, Corel WordPerfect, *search* SysAdmin Help
De-installing Corel WordPerfect 5.1 11
DEC VT100 and VT220/240 terminals *see* Digital VT100 and VT220/240 terminals, WPTERM7 settings for
Dedicated WPAApp Device output type, *search* SysAdmin Help
Default language 22, 41
Defaults
 shared printers 34, 60
 user settings 33, 60
 search SysAdmin Help
Delay before resetting line, *search* SysAdmin Help
Deleting
 job types, *search* SysAdmin Help
 printer destinations, *search* SysAdmin Help
 printer/destination assignments 23
 printers, *search* SysAdmin Help
 Speller words, *search* SysAdmin Help
 spooler options, *search* SysAdmin Help
 temporary files, *search* SysAdmin Help
Deleting files to save disk space, *search* SysAdmin Help
Demonstration copies of Corel WordPerfect, *search* SysAdmin Help
Destinations *see* Printer destinations
Device names, in mount commands for CD-ROMs 15
Dictionaries, Speller, *search* SysAdmin Help
Digital DECStation, WPTERM7 settings for 53
Digital VT100, VT220/240 terminals, WPTERM7 settings for 51
Directories, Corel WordPerfect .wpcorp settings directories 33, 60
Corel WordPerfect installation directory 25, 48
 search SysAdmin Help
Disk output type, *search* SysAdmin Help

Disk space
 approximate requirements 5
 requirements shown in Installation program 12, 19
 search SysAdmin Help
DISPLAY environment variable, *search* SysAdmin Help
Document compatibility, with Corel WordPerfect 6.0 for Windows or DOS 12
DOS Corel WordPerfect 6.0 *see* Corel WordPerfect 6.0 for DOS
Downloadable fonts path, *search* SysAdmin Help

E

/etc/magic file 22, 42
/etc/printcap file, *search* SysAdmin Help
/etc/qconfig file, *search* SysAdmin Help
Editing
 job types, *search* SysAdmin Help
 printer destinations, *search* SysAdmin Help
 printer setup options, *search* SysAdmin Help
 UNIX system files during installation 73
Environment variables
 DISPLAY, *search* SysAdmin Help
 WPTERM7 43, 51, 53
 search SysAdmin Help
Error messages
 finding in SysAdmin Help 31, 58
 search SysAdmin Help
Error: Could not open the file setting.trs 54
Evaluation copies of Corel WordPerfect, *search* SysAdmin Help
excmsg60* files, *search* SysAdmin Help
Executable files, *search* SysAdmin Help
Existing Corel WordPerfect products, using for default configuration 20, 40
Exiting Corel WordPerfect, hard-coded keystroke 54
Expanded International .drs file, *search* SysAdmin Help
Expiration date of Corel WordPerfect, *search* SysAdmin Help

ExpressDocs files, *search* SysAdmin Help
Extending demonstration copies, *search* SysAdmin Help

F

File compatibility with Corel WordPerfect 6.0 for Windows or DOS 12
File locking, disabling, *search* SysAdmin Help
Filenames
 print-to-disk files, *search* SysAdmin Help
 temporary files, *search* SysAdmin Help
Files, Corel WordPerfect, *search* SysAdmin Help
Files, UNIX, modified during installation 73
Filter option (lpr spooler only), *search* SysAdmin Help
FLEXlm, *search* SysAdmin Help
Font Installer, *search* SysAdmin Help
Font map, *search* SysAdmin Help
Font server, *search* SysAdmin Help
Fonts, display, *search* SysAdmin Help
Fonts, graphics, *search* SysAdmin Help
Fonts, printer, *search* SysAdmin Help
Foreign language versions *see* Language versions
Format
 documents 12
 macros 11
Formatter, *search* SysAdmin Help
FTP server, *search* SysAdmin Help
Function keys, problems with 54

G

Generating multiple copies, *search* SysAdmin Help
Glossary, online in SysAdmin Help 67, 70
Graphical user interface (GUI), *search* SysAdmin Help
Graphics files
 samples, *search* SysAdmin Help
 transferring from Windows or DOS to UNIX 12
Graphics fonts, *search* SysAdmin Help
Graphics, turning off printing of, *search* SysAdmin Help

Greek character set, printing, *search*

SysAdmin Help

Groups, lmadm for License

Manager, *search* SysAdmin Help

Groups, restricting print privileges,

search SysAdmin Help

GUI, *search* SysAdmin Help

H

Handshaking, *search* SysAdmin Help

Hard exit keystroke 54

Hebrew character set, printing, *search*

SysAdmin Help

Help information available in

Corel WordPerfect 52, 55

Corel WordPerfect SysAdmin Help

65, 69

Installation program 19, 39, 73

Holding print jobs, *search* SysAdmin

Help

HP 9000 700/800

mount command for CD-ROMs

15

workstations, WPTerm7 settings

for 53

HP LaserJet printer fonts, *search*

SysAdmin Help

Hyphenation utility, *search* SysAdmin

Help

I

IBM 3151 terminals, WPTerm7

settings for 51

IBM RS/6000

mount command for CD-ROMs

15

Increasing number of licensed sessions,

search SysAdmin Help

Index, for SysAdmin Help 69

Initializing printers, *search* SysAdmin

Help

Installation program

canceling 19, 39

help information in 19, 39

modifying UNIX system files 73

running on remote machine 75

running without root permissions

73

starting 16

search SysAdmin Help

Installing Corel WordPerfect 19, 39

administration alternatives 9

checklist of required steps 4

planning list 5

printer driver/destination

assignments 23, 45

printer drivers 22, 44

questions and answers 11

system information questions 20,

40

terminal drivers 22, 42

to remote machine 75

without root permissions 73

Installing graphics/printer fonts, *search*

SysAdmin Help

Intel SVR4 *see* AT&T GIS System,

UnixWare

Interactive consoles, WPTerm7

settings for 51

Interface files, *search* SysAdmin Help

International characters *see*

Multinational characters

International versions *see* Language

versions

International-Expanded .drs file, *search*

SysAdmin Help

Internet Protocol (IP), TCP vs. UDP,

search SysAdmin Help

Interprocess communication (IPC),

search SysAdmin Help

ISO Latin-1 character set, *search*

SysAdmin Help

J

Japanese character set, printing, *search*

SysAdmin Help

Job types, *search* SysAdmin Help

K

Keyboard layouts

for character-based terminals 51

for X stations 53

Keystrokes

different on different terminals 51

hard-coded exit 54

looking up 52, 55

Killing

License Manager, *search* SysAdmin

Help

Print Server, *search* SysAdmin Help

L

\$LPDEST environment variable,
search SysAdmin Help

Language versions

selecting during installation 21, 41
search SysAdmin Help

LaserJet fonts, *search* SysAdmin Help

Leading banners, *search* SysAdmin

Help

Learn files

setting up for users 34

search SysAdmin Help

License daemon, *search* SysAdmin

Help

License Manager

starting during installation 26, 49

search SysAdmin Help

License number, providing during

installation 21, 40

License server, specifying during

installation 21, 41

license.dat and license.opt files, *search*

SysAdmin Help

Licensed sessions

increasing number, *search* SysAdmin

Help

providing number during

installation 21, 41

Line settings, *search* SysAdmin Help

Line type, *search* SysAdmin Help

Listing, *search* SysAdmin Help

lmadm group, *search* SysAdmin Help

lmgrd daemon, *search* SysAdmin Help

Loading, Corel WordPerfect media 15

Logging in remotely, *search* SysAdmin

Help

Looking up words in Speller

dictionaries, *search* SysAdmin

Help

lp printer destinations 23, 46

search SysAdmin Help

lp spooler

output type *search* SysAdmin Help

search SysAdmin Help

lpr printer destinations 23, 46

search SysAdmin Help

lpr spooler

output type *search* SysAdmin Help

search SysAdmin Help

converting from 5.1 and 6.0 to 7
format 11
transferring from Windows or DOS
to UNIX 12
search SysAdmin Help
agic file, editing during installation
22, 42
ail, enabling in Corel WordPerfect,
search SysAdmin Help
ain word list in Speller dictionary,
search SysAdmin Help
apping printer fonts, *search*
SysAdmin Help
edia, mount commands for
CD-ROMs 15
emory, approximate requirements
12
essages, looking up error messages,
search SysAdmin Help
IPS ABI *see* Siemons Nixdorf,
SiliconGraphics
otif *see* Window manager
ount commands for CD-ROMs 15
ounting, remote, CD-ROM drive
75
oving
files from Windows or DOS to
UNIX 12
print jobs, *search SysAdmin Help*
windows on display, *search*
SysAdmin Help
ultinational characters, *search*
SysAdmin Help
ultiple copies, printing, *search*
SysAdmin Help
etwork traffic, minimizing, *search*
SysAdmin Help
etworks, installing Corel
WordPerfect across 75
on-displayable characters, *search*
SysAdmin Help
on-roman character sets, printing,
search SysAdmin Help
on-root installations of Corel
WordPerfect 10
on-spooler printing, *search SysAdmin*
Help

Number of copies, *search SysAdmin*
Help
Number of licensed sessions
increasing, *search SysAdmin Help*
providing during installation 21, 41

O

OpenDesktop (SCO) *see* SCO
OpenDesktop, SCO UNIX
Optimizing
Corel WordPerfect, *search SysAdmin*
Help
Speller dictionaries, *search SysAdmin*
Help
Optional destination settings, *search*
SysAdmin Help
Options in spool commands, *search*
SysAdmin Help
Output types, *search SysAdmin Help*
Overview
License Manager, *search SysAdmin*
Help
SysAdmin Help 30, 57
WPAApp printing, *search SysAdmin*
Help
X Window basics, *search SysAdmin*
Help
Overwriting Corel WordPerfect 5.1 or
6.0 with Corel WordPerfect 7 20,
40

P

.pcf font files, *search SysAdmin Help*
.pfb and .pfm graphics/printer fonts,
search SysAdmin Help
.prs files *see* Printer drivers
\$PRINTER environment variable,
search SysAdmin Help
Parallel printers, *search SysAdmin Help*
Parameters *see* Command line options,
Startup options
Parity, *search SysAdmin Help*
Passthru output type, *search SysAdmin*
Help
Path for downloadable fonts, *search*
SysAdmin Help
Personal Print Queue, *search*
SysAdmin Help
Personal printers, *search SysAdmin*
Help
Personal Speller dictionaries, *search*
SysAdmin Help

Personalizing Corel WordPerfect,
personal settings files 33, 60
Planning guide for installation 5
Platform compatibility with Corel
WordPerfect 6.0 for Windows or
DOS 12
Ports *see* Printer destinations
Post-installation tasks, for non-root
installations of Corel WordPerfect
74
PostScript fonts, *search SysAdmin*
Help
Power outage, cleaning up after, *search*
SysAdmin Help
Preferences
Corel WordPerfect 33, 60
printer destinations, *search*
SysAdmin Help
printing, *search SysAdmin Help*
Primary Corel WordPerfect
administrator, defined 9
Print color, *search SysAdmin Help*
Print Formatter, *search SysAdmin*
Help
Print jobs, *search SysAdmin Help*
Print Manager, *search SysAdmin Help*
Print priority, *search SysAdmin Help*
Print privileges, restricting, *search*
SysAdmin Help
Print quality, *search SysAdmin Help*
Print queue, *search SysAdmin Help*
Print Server, *search SysAdmin Help*
Print spoolers, *search SysAdmin Help*
Print wheels, adding, *search SysAdmin*
Help
printcap file, *search SysAdmin Help*
Printer .all files
printer drivers grouped together in
22, 44
search SysAdmin Help
Printer commands, *search SysAdmin*
Help
Printer Control, *search SysAdmin Help*
Printer Definition program, *search*
SysAdmin Help
Printer Destination program, *search*
SysAdmin Help
Printer destinations
assigning during installation 45
search SysAdmin Help
Printer directories, *search SysAdmin*
Help
Printer drivers

- changing names during installation 24
- selecting during installation 22, 44
search SysAdmin Help
- Printer environment variables, *search SysAdmin Help*
- Printer fonts, *search SysAdmin Help*
- Printer interface files, *search SysAdmin Help*
- Printer ports *see* Printer destinations
- Printer resource (.prs) files *see* Printer drivers
- Printer troubleshooting, *search SysAdmin Help*
- Printers
 - selecting during installation 22, 44
 - selecting in Corel WordPerfect 29, 56
search SysAdmin Help
- Printers attached to terminals, *search SysAdmin Help*
- Printing
 - testing 28, 55
search SysAdmin Help
- Priority for print jobs, *search SysAdmin Help*
- Product compatibility of Corel WordPerfect 6.0 for UNIX, with other related products for UNIX 11
- Protocols, Internet, *search SysAdmin Help*
- ptr *see* Printer Definition program

Q

- qconfig file, *search SysAdmin Help*
- Question marks (upside down) in display, *search SysAdmin Help*
- Questions and answers about installation 11
- Queued print jobs, listing, controlling, *search SysAdmin Help*
- QuickFinder index, for SysAdmin Help 69

R

- RAM requirements 12
 - displayed during installation 19
- Raw spooler option, *search SysAdmin Help*
- README files

- README.install has
 - post-installation tasks 74
- README.trs lists supported terminals 51, 53
- viewing during installation 26, 49
search SysAdmin Help
- Reinstalling Corel WordPerfect, *search SysAdmin Help*
- Remote installations of Corel WordPerfect 75
- Remote logging in, *search SysAdmin Help*
- Remote machines, *search SysAdmin Help*
- Remote printers, *search SysAdmin Help*
- Remove unused WPAApp spooler options, *search SysAdmin Help*
- Renaming
 - printer destinations, *search SysAdmin Help*
 - printer drivers, *search SysAdmin Help*
- Reordering print jobs in print queue, *search SysAdmin Help*
- Requirements, disk space and RAM 5, 12
- Resources *see* X resources
- Restore settings delay, *search SysAdmin Help*
- Restricting users' print privileges, *search SysAdmin Help*
- root, not required to install Corel WordPerfect 73
- RS/6000 (IBM) *see* IBM RS/6000
- Russian character set, printing, *search SysAdmin Help*

S

- .sfp and .sfl printer fonts, *search SysAdmin Help*
- .snf font files, *search SysAdmin Help*
- Sample commands, conventions used for 9
- SCO OpenDesktop, WPTerm7 settings for 53
- SCO UNIX
 - consoles, WPTerm7 settings for 51
 - mount command for CD-ROMs 15

- Searching, for information in SysAdmin Help 70

Selecting

- default job type, *search SysAdmin Help*
- default language 21, 41
- default printer 30, 57
- filter option, *search SysAdmin Help*
- output types, *search SysAdmin Help*
- printer destinations 23, 45
- printer drivers 22, 44
- printers 29, 56
search SysAdmin Help
- Serial printers, *search SysAdmin Help*
- Setting, WPTerm7 environment variable 51, 53
- Settings directory (.wpcorp), *search SysAdmin Help*
- Settings files 33, 60
search SysAdmin Help
- SGI *see* SiliconGraphics
- Shared Code 10
 - compatibility with earlier related products 11
- Shared directories, shbin10 and shlib10 10
- Shared printers 34, 60
search SysAdmin Help
- shbin10 directory, *search SysAdmin Help*
- Sheet feeders, *search SysAdmin Help*
- shlib10 directory, *search SysAdmin Help*
- SHTMP environment variable, *search SysAdmin Help*
- Siemons Nixdorf, mount command for CD-ROMs 15
- SiliconGraphics, mount command for CD-ROMs 15
- Slave printing *see* Passthru output type
- Slow response time, improving, *search SysAdmin Help*
- Soft fonts, adding, *search SysAdmin Help*
- Solaris 2
 - mount command for CD-ROMs 15
- SPARCstations *see* Sun SPARCstations, WPTerm7 settings for, SunOS
- Speed of execution, increasing, *search SysAdmin Help*

Speller dictionaries, *search SysAdmin Help*
 Speller Utility, *search SysAdmin Help*
 Spooler options, providing during installation 24, 46
 Spoolers, *search SysAdmin Help*
 Starting
 Corel WordPerfect, as Corel WordPerfect administrator 28, 51
 License Manager, *search SysAdmin Help*
 print jobs, *search SysAdmin Help*
 Print Server, *search SysAdmin Help*
 SysAdmin Help 30, 57, 65, 68
 Startup options, *search SysAdmin Help*
 statistics, accounting, *search SysAdmin Help*
 Status
 License Manager, *search SysAdmin Help*
 Printer Control, *search SysAdmin Help*
 Stopping
 License Manager, *search SysAdmin Help*
 print jobs, *search SysAdmin Help*
 Print Server, *search SysAdmin Help*
 Sun SPARCstations, WPTERM7 settings for 53
 SunOS, mount command for CD-ROMs 16
 Superuser permissions
 for License Manager, *search SysAdmin Help*
 not required to install Corel WordPerfect 73
 Supplementary Speller dictionaries, *search SysAdmin Help*
 Switch boxes, *search SysAdmin Help*
 Switches *see* Command line options
 Startup options
 SysAdmin Help 65, 68
 contents 66, 69
 System 3000 *see* AT&T GIS System
 System boot files, editing during installation 21, 41
 System failure, cleaning up after, *search SysAdmin Help*
 System requirements, disk space and RAM 12

T

Temporary directories, *search SysAdmin Help*
 Temporary files, *search SysAdmin Help*
 TERM environment variable, used during character-based installation 43
 Terminal Definition program, *search SysAdmin Help*
 Terminal drivers, *search SysAdmin Help*
 Terminals *see also* X stations
 list of supported 51
 resolving problems with 54
 setup, *search SysAdmin Help*
 troubleshooting, *search SysAdmin Help*
 WPTERM7 settings for 51
 Terminals with printers attached, *search SysAdmin Help*
 terminfo database 43
 Testing
 Corel WordPerfect 28, 51
 printing from Corel WordPerfect 28, 55
 Third-party products, *search SysAdmin Help*
 Trailing banners, *search SysAdmin Help*
 Translated versions of Corel WordPerfect *see* Language versions
 Troubleshooting
 strategies in SysAdmin Help 32, 59
search SysAdmin Help
 Type 1 graphics/prINTER fonts, *search SysAdmin Help*

U

.usp and .usl printer fonts, *search SysAdmin Help*
 Unassigning printer destinations 23
 Undisplayable characters, *search SysAdmin Help*
 UNIX printer destinations 23, 46
search SysAdmin Help
 UNIX system boot files, editing during installation 21, 41
 UnixWare, mount command for CD-ROMs 16
 Updating

Corel WordPerfect, *search SysAdmin Help*
 printer destinations, *search SysAdmin Help*
 printer drivers, *search SysAdmin Help*
 Speller dictionaries, *search SysAdmin Help*
 Upgrade Utility, *search SysAdmin Help*
 Upgrading, from Corel WordPerfect 5.1 and 6.0 11
 Upside down question marks in display, *search SysAdmin Help*
 User restrictions, *search SysAdmin Help*
 Users
 providing Learn files 34
 setting up to run Corel WordPerfect 33, 59

V

Variables, in sample commands, printed in italics 9
 Vendor daemon, *search SysAdmin Help*
 VT100, VT220/240 terminals *see* Digital VT100, VT220/240 terminals, WPTERM7 settings for

W

.wp7x.set and .wpc7x.set files 33, 60
search SysAdmin Help
 .wpcorp directory, *search SysAdmin Help*
 Window manager
 adding Corel WordPerfect to menu 30
search SysAdmin Help
 Windows Corel WordPerfect 7 *see* Corel WordPerfect 7 for Windows
 Windows, activating, moving, resizing, *search SysAdmin Help*
 wp.drs file, *search SysAdmin Help*
 Wp60 X resource file 73
 WPAApp printer destinations 23, 46
search SysAdmin Help
 WPAApp printing process, *search SysAdmin Help*
 WPAApp Spool Command output type, *search SysAdmin Help*

wpbin directory, *search* SysAdmin Help
 wpdest, *search* SysAdmin Help
 wpdest.def file, *search* SysAdmin Help
 wpexc60
 search SysAdmin Help
 wpexpdocs directory, *search* SysAdmin Help
 wpfi, *search* SysAdmin Help
 wpgraphics directory, *search* SysAdmin Help
 wpinstall *see* Installation program
 WPLANG environment variable,
 search SysAdmin Help
 wplearn directory, *search* SysAdmin Help
 wplib directory, *search* SysAdmin Help
 wplicense, *search* SysAdmin Help
 wplmd60 daemon, *search* SysAdmin Help
 wpmacros directory, *search* SysAdmin Help
 wpp, *search* SysAdmin Help
 wpped script, *search* SysAdmin Help
 wppmgr, *search* SysAdmin Help
 wpport *see* Printer Destination program
 wpport.def file *see* wpdest.def file
 wppq, *search* SysAdmin Help
 wprint, *search* SysAdmin Help
 wpsputl, *search* SysAdmin Help
 wpterm *see* Terminal Definition program
 WPTERM7 environment variable 43
 complete list of settings 51
 settings for character-based terminals 51
 settings for X stations 53
 search SysAdmin Help
 WPTMP environment variable, *search* SysAdmin Help
 wpupg, *search* SysAdmin Help
 wpxtool window 52
 for Corel WordPerfect 54
 for SysAdmin Help 57
 WYSE 60 terminals, WPTERM7 settings for 51

X

X fonts, *search* SysAdmin Help
 X resources 73
 search SysAdmin Help

X stations *see also* Terminals
 installing Corel WordPerfect on 19
 WPTERM7 settings for 53
 X11 R4 vs. X11 R5 fonts, *search* SysAdmin Help
 XON/XOFF handshaking, *search* SysAdmin Help
 xwpdest, *search* SysAdmin Help
 xwpfi, *search* SysAdmin Help
 xwppmgr, *search* SysAdmin Help